

**Great Bend**  
CHAMBER of COMMERCE  
and ECONOMIC DEVELOPMENT

# Outlook

## Business Journal

[www.greatbend.org](http://www.greatbend.org)

*A Monthly Publication of the Great Bend Chamber  
of Commerce and Economic Development*

November 2015 • Volume 94 No. 11

## SMALL BUSINESS SATURDAY

### A National Campaign to Shop Local Nov. 28

In 2010, national credit card company American Express founded a marketing campaign known as Small Business Saturday to help businesses with their most pressing need — getting more customers. The day encourages people to shop at small businesses on the Saturday after Thanksgiving. The single day has grown into a powerful movement, and more people are taking part than ever before. This year, the big day is November 28th.

In 2011, the day became official when governors, mayors, senators, and even President Obama voiced their support for Small Business Saturday. The following year, American Express provided incentives to people who shopped at participating small businesses, and an estimated \$5.5 billion was spent at independent businesses during the 2012 event. In 2013, the campaign started a new program for Neighborhood Champions who pledged their support to help brand the event in their local communities. The result was an overwhelming cry of support.

This year, there are two ways you can participate. Neighborhood Champions are being recruited to serve as the voice for their community. Champions can sign up for free at [www.shopsmall.com](http://www.shopsmall.com). Once you're signed up as a Champion, you'll receive Shop Small welcome mats, shopping bags, and other items to make your celebration a memorable one.

But the most notable way that local businesses can take advantage of the free advertising through Small Business Saturday is to sign up as a participating retailer. Owners and managers can visit [www.shopsmall.com](http://www.shopsmall.com) to add their business to the rapidly expanding list of participating locations. Once they are signed up, they will also receive printable signage to display in their business, free online ads to promote your business, sample email templates and social media posts, a digital copy of the Shop Small logo to use in advertising and promotional items, and more. These resources are provided at no charge to independently owned companies across America.

The Great Bend Chamber of Commerce & Economic Development is a proud Neighborhood Champion, and we encourage our local businesses to sign up to participate. It's free, so what do you have to lose?

For more information or to sign up as a Neighborhood Champion or Participating Retailer, visit [www.shopsmall.com](http://www.shopsmall.com) or find the Small Business Saturday page on Facebook.



**"Outlook Business Journal"**

A monthly publication of the



1125 Williams,  
Great Bend, KS 67530  
Phone: 620-792-2401  
Fax: 620-792-2404

Web address: [www.greatbend.org](http://www.greatbend.org)

**EXECUTIVE COMMITTEE**

Chairman

**Kenny Vink**, Office Products Inc.

Vice Chairman

**Dennis Neeland**, Great Bend Co-op Association

2nd Vice Chairman

**Paul Snapp**, First Kansas Bank

Immediate Past Chairman

**Curt Mauler**, L&M Contractors

Treasurer

**Alan Burton**, MPIRE Properties

**BOARD OF DIRECTORS**

**Linda Bonewell**

Fuller Industries, LLC

**Taylor Calcara**

Watkins Calcara, Chtd.

**Frank Callahan**

American Family Insurance

**Matt Dykes**

Epoxy Poly, Inc.

**Matt Fehr, DVM**

Animal Medical Center

**Brent Hanson**

Great Bend Regional Hospital

**Kevin Keller**

Keller Real Estate & Insurance Agency

**Kevin Mauler**

4M Farms

**Candice Moeder**

QS Nurses / BCYP

**Rodrigo Razo**

Playa Azul Mexican Restaurant

**Leilani Schenkel, RN**

Almost Home, Inc.

**Chris Smith**

Smith Supply, LLC

**Aaron Spanier**

Innovative Livestock Services

**Marty Steinert**

Dove Buick Chevrolet Cadillac / Ambassador Club

**Jan Westfall**

Hi Neighbor Publications

**EX-OFFICIO**

**Cris Collier**, Great Bend CVB

**To Be Filled**, Barton Community College

**Vicki Berryman**, Great Bend City Council

**Brad Reed**, USD #428

**Jennifer Schartz**, Barton County Commission

**CHAMBER STAFF**

**Jan Peters, President/CEO**  
[jpeters@greatbend.org](mailto:jpeters@greatbend.org)

**Andrea Bauer, Director of Sales & Member Services**  
[abauer@greatbend.org](mailto:abauer@greatbend.org)

**Roxanne Rich, Office/Business Manager**  
[rich@greatbend.org](mailto:rich@greatbend.org)



**St. Rose Hosts After Hours  
Nov. 4 to Showcase Facility**

St. Rose Health Center is excited to host a Grand Opening Celebration on Wednesday, November 4th from 5-7 p.m. featuring facility tours, hors d'oeuvres, and remarks about the newly renovated healthcare facility. A Chamber ribbon cutting will take place at 5:15 p.m. Tom Bell, President of the Kansas Hospital Association, will serve as the keynote speaker. Door prize drawings will take place following the program. Must be present to win.

**ABOUT ST. ROSE HEALTH CENTER:**

St. Rose specializes in primary care, prevention and wellness. Services include St. Rose Family Medicine, Convenient Care Walk-in Clinic, Great Bend Internists, imaging, infusion clinic, Wellness-Works, one-day surgical procedures, Golden Belt Home Health & Hospice and a comprehensive Specialty Clinic. St. Rose is co-owned by Hays Medical Center and Centura Health.

**Construction Continues  
on Holiday Inn Express**

Great Bend's newest hotel, the Holiday Inn Express, is currently under construction on the south side of 10th Street between McKinley and Grant Streets. The 4-story hotel property will feature 72 rooms, 74 parking spaces, and a meeting room that can accommodate up to 50 people.

The hotel developer is using several local contractors, including Joiner Construction. The new facility has certainly changed the landscape of Great Bend, as is evident in the sunrise photo seen here. Holiday Inn Express is slated to open in March of 2016.

**WELCOME to these  
NEW Chamber Members!**

**Budget Blinds of South Hutchinson**

Kenneth Thode, Owner  
2105 Northridge Rd  
Hutchinson, KS 67502  
620-644-4355  
*Home Improvement*

**Star of Hope**

Mark Presson, Director  
PO Box 427  
Ellinwood, KS 67526  
1-866-653-0321  
*Non-Profit Organizations*

**2B Organized**

Sonya Rein, Owner  
PO Box 1667  
Great Bend, KS 67530  
620-617-8195  
*Organizing Services*

**Safer Art Gallery**

Dave Barnes, Gallery Director  
245 NE 30 Rd  
Great Bend, KS 67530  
620-792-9342  
*Art Gallery*

**Xelmar Medical Spa**

Dr. Aisha Rush, Owner  
3421 Forest Ave  
Great Bend, KS 67530  
1-855-440-4442  
*Medical Aesthetic Center*



**Nextech** here for you  
Lindsey  
Customer Sales, Great Bend

**Conrade** Insurance Group  
*We Make it Our Business to Serve Your Business!*  
Contact us for a quote!  
316-283-0093  
[www.conradeinsurance.com](http://www.conradeinsurance.com)

## Chamber Member Appreciation Week Returns Nov. 2-6 with Events & Giveaways!

The Great Bend Chamber of Commerce & Economic Development wants to show YOU, our members, how much we appreciate all that you do for our community and for this organization. Every year, we host Member Appreciation Week, but this year we are really stepping it up! As the headline suggests, it'll be a jam-packed week with opportunities for you to get free advertising, give us your feedback for 2016 member services, and enter to win Chamber gift certificates!

Member Appreciation week technically started a little before November, with a special contest that took place October 12-26th. To encourage every member to take advantage of the NEW Member Information Center (MIC) profile on the Chamber website, we're going to give away a VIP Member Feature Package to one business who creates the most compelling profile! Every member who makes updates to their profile was entered to win.

The winning Chamber member will receive several forms of recognition. First, the Chamber will create and send a special edition email featuring their company to kick off Member Appreciation Week. Second, they'll be publically recognized during the Chamber Coffee on November 5th. And third, they'll be mentioned in the December issue of the Chamber's Outlook Business Journal.

If you need a little help getting started with your company's M.I.C. listing, join us for a come-and-go technical support session on November 4th from 9-11 a.m. at the Chamber office. We'll serve coffee and donuts, and staff will be on-hand to walk you through your profile updates.

Our annual Member Feedback Survey will run through the end of Member Appreciation Week, closing on November 6th. This is your chance to give feedback on Chamber services and programs and help us shape our plans for the coming year. As always, three lucky respondents will win a \$50 chamber gift certificate!

Stay tuned for more information about Member Appreciation Week, our Online Feedback Survey, and all your chances to win!

## Member Appreciation Week Schedule

- November 2nd – Special Email Recognizing the MIC Profile Contest Winner
- November 3rd – Work on the Profile & Survey
- November 4th – Coffee & Donuts + MIC Tech Support @ 9-11 a.m. (Come-and-Go)
- November 5th – Chamber Coffee & Public Recognition of MIC Profile Contest Winner
- November 6th – Survey Closes – Last Chance to Win!

## November is Explore Great Bend Month at Great Bend Retailers!

Once again, the City of Great Bend is working with over 30 local businesses this November in a collaborative marketing campaign revolved around "Exploring Great Bend," which presents the best of everything the city has to offer. Explore Great Bend month will paint the city in a festive mood with a unique blend of shopping, promotions, entertainment and a \$1,000 prize to promote local spending. It's a winning combination that will help put Great Bend back on the citizen's map as a place to have fun, shop and experience overall.

A diverse range of retail experiences are available – from bargains, promotions, sales, and unique offers. Drawing boxes will only be put out on Saturdays in November (and Black Friday), and the special events involved will hopefully draw a crowd. To win the \$1,000 first place prize, the \$500 second place prize, or the \$250 3rd place prize, anyone can register for free in any of the participating locations; however only on these dates will registration be available.

Each individual store and or participating location will put together their own discount or special event. Explore Great Bend has teamed up with the Panther Paw Craft Festival, the Home for the Holidays Parade, the Rosewood Services Cookie Contest, and others to build on these existing events.

Local shoppers are encouraged to show their support by signing up to win the shopping spree giveaways and checking out what great things this City has to offer. Registrants do not have to be present to win the \$1,000 or \$250 shopping spree.

For more information about the shopping spree giveaway or to see a list of participating businesses, visit the Explore Great Bend Facebook page!

**Nov. 7th**

**Stache Dash & Open Houses**  
Local businesses will spotlighting their new products.

**Nov. 14th**

**Caught Ya Exploring**  
Shoppers get rewarded with gift certificates to participating stores! Bonus!

**Nov. 21st**

**Find the Turkey**  
Each store will have a hidden turkey. Find it and get a special discount!

**Nov. 27th**

**Black Friday Doorbuster**  
deals and great bargains! Shop all day with local businesses.

**Nov. 28th**

**Small Business Saturday & Cash Giveaway**  
Cookie contest, parade, and cash giveaway!

Leaky faucets? Clogged pipes?  
Stool overflowing? Furnace busted?

Turn to the Experts at Isern!

Heat & Air • Plumbing • Electrical



Carl Isern & Dan Mawhirter  
620-564-3377

iserninc@hbcomm.net

OUR business is to  
help YOUR business  
GROW!

See us for:

Commercial Loans    Inventory Financing  
Working Capital    Equipment Purchases  
SBA Loans            Ag & Energy Loans



1017 Harrison  
Great Bend, KS  
620-792-2411  
www.farmersbankks.com



**DOONAN  
GMC**

Visit the **Doonan Truck Museum**  
(Tours available by appointment)  
Jct. 56 & 156 620-792-2491

Doonan GMC Pre-Owned Lot  
10th & Washington in Great Bend

[www.doonantruck.com](http://www.doonantruck.com)

## Farewell to Chamber of Commerce Marketing Director Rachel Mawhirter

The Board of Directors and staff of The Great Bend Chamber of Commerce & Economic Development would like to thank Rachel Mawhirter for her incredible work during the last 8 years at The Chamber/ED.

Rachel was instrumental in creating all of the marketing and public relations efforts, including a rebrand initiative that will launch in 2016. She played a significant role in the development of the Big Bend Bike Rally and the Barton Young Professionals group, which now has over 700 members.



Rachel has been an outstanding staff member who never backed down from a challenge and took on many extra projects to serve our members and community. All of the communications with our members is a direct result of Rachel's hard work and determination.

We wish her the best in her new venture as The Marketing Director & Physician Recruiter for Great Bend Regional Hospital. She has been a tremendous asset to our organization.

The Chamber/ED is currently seeking a new Marketing Coordinator and a Project Specialist. For additional information on these positions, check out the job listings at [centralkansasjobs.com](http://centralkansasjobs.com).

### Jan Peters, President

Great Bend Chamber of Commerce & Economic Development

## OPI Celebrates Larned's 25th Anniversary

The owners of Office Products Inc. (OPI) have recognized the 25-year-old business with a certificate of appreciation for its employees. It states: "For dedication and outstanding commitment in assisting our customers for the past 25 years."

This year marks the 25th birthday of OPI in Larned, 516 Broadway. "Our business is unique to Larned," said Cory Stelter, account executive. "If you are out of office supplies and products, you don't have to drive to a bigger town in the area."

Stelter is in his 10th year at OPI; his colleagues in Larned are Manager Craig Vink; and Duane Fogo, account executive, who has been there 16 years. Gentry McLeland recently came on board to help with customer service.

The other OPI locations are 1204 Main in Great Bend and 724 N. Main in Russell. The company is based in Great Bend where it opened in 1959. The Larned store opened in 1990, and Russell opened in 2010.

## Young Professionals Spotlight

*A monthly update on activities & events for members of the Barton County Young Professionals group.*

During the month of October, the Barton County Young Professionals group was busy with two huge fall events. The first was the annual Family Fall Fest on a Sunday evening at Long's Pumpkin Patch north of Great Bend sponsored by Bauer & Pike Law Firm. The following weekend, the first ever YP5K and Half Marathon drew approximately 100 people to Veterans Memorial Park for two professionally timed race events, followed by a free breakfast and family fun zone. The event raised money for bike racks that will be installed around Barton County in 2016. Photos from both of these events can be viewed on the Barton County Young Professionals Facebook page.

In November, the growing networking group will gather for a Friday night networking mixer sponsored by the Hutchinson Clinic at their Great Bend satellite office, 514 Cleveland (behind Great Bend Regional Hospital). The sponsor is providing free food and refreshments, along with a photo booth, music, and awesome door prizes. As always, mixers are free to attend and guests are welcome and encouraged to attend to sign up as a BCYP member. Employers are encouraged to send their staff.

Then on December 1st, the first ever "Party with a Purpose" will take place at sponsoring business Satellite Pros, located at 10th & Madison. Admission to the Christmas party is a pair of pajamas that will be added to a "Night Before Christmas" package for children served by Central Kansas CASA. Satellite Pros will provide holiday refreshments and door prize drawings. RSVP's are requested so guests can find out what size of pajamas are needed. Join the Facebook event for details.

Keep up with news and events for Barton County Young Professionals by signing up for the YP email newsletter and like the Facebook Page, [www.facebook.com/bartonyp](http://www.facebook.com/bartonyp).

### Want to Join?

Anyone who works in Barton County between the ages of 21 and 40 is welcome to join the growing group at any time. For more details or to join, email [bartonyp@gmail.com](mailto:bartonyp@gmail.com). And be sure to like the Facebook page!



[www.GreatBendRec.net](http://www.GreatBendRec.net)

...EXPLORE...CREATE...PLAY!

**the Rec**

## Chlumsky Liquormart

2204 Kansas  
Great Bend  
620-792-1929

Let Ours Be Your  
Favorite Store

**AMC**  
Animal Medical Center

To a pet, food is love. Show them you care.

**25% OFF**  
Science Diet Foods & Treats for Cats & Dogs

Animal Medical Center  
622 McKinley Ave  
620-792-1265

Expires Nov. 30, 2015

# NOVEMBER CALENDAR OF EVENTS

View & post all your community events at [www.greatbend.org](http://www.greatbend.org)!

- 1... Holiday Décor, Flavored Celebrations, 1315 Stone, 2-4 p.m.
- 1... Grand Opening of Xelmar Medical Spa, 3421 Forest, 1-4 p.m.
- 2... BCYP Steering Committee Meeting, Chamber Board Room, 1125 Williams, 4 p.m.
- 2... Great Bend City Council Meeting, 1209 Williams, 7:30 p.m.
- 2-6... Member Appreciation Week, Great Bend Chamber of Commerce, 1125 Williams
- 3... BCC Free Citizenship Classes, Adult Education, 1025 Main, 10 a.m. and 7 p.m.
- 4... Sunflower Diversified Services' Pizza by the Slice Fundraiser, 1521 K-96 Highway, 11 a.m. to 2 p.m.
- 4... Business After Hours: St. Rose Health Center, 3515 Broadway, 5-7 p.m.
- 5... Chamber Coffee: Kansas Doors, 5523 10th Street, 9:30 a.m.
- 5... ChamberConnect Radio Show Airs, KVGB 1590 AM, 11:35 a.m.
- 5... Chamber Ambassador Club Luncheon, 1125 Williams, 12 p.m.
- 6... GBPL Adults Night Out Movie, 1409 Williams, 7 p.m.
- 6... Chamber Feedback Survey Closes – Last Chance to Enter to Win \$50!
- 7... Explore Great Bend Registration Date, Participating Businesses, Store Hours Vary
- 7... Creative Re-Purposing Workshop at Heartland Farm, 1049 CR 390 Pawnee Rock, 9 a.m.
- 7... "The Rifleman" Centennial, North Side of Barton County Courthouse, 10 a.m.
- 7... Sidewinders Casino Night for United Way, 21 N. Main in Ellinwood, 7-10 p.m.
- 10... Golden Belt Community Concert, Municipal Auditorium, Lakin & Stone, 7:30 p.m.
- 11... Technology Roundtable Luncheon, Chamber Board Room, 1125 Williams, 11:30 a.m.
- 12... Chamber Coffee: World Pest Control & Sunflower Services, Chamber Board Room, 1125 Williams, 9:30 a.m.
- 12-15... GBCT Production "Til Beth Do Us Part", Crest Theatre, 1905 Lakin, 8 p.m. Thurs-Sat, 2 p.m. Sun
- 13... BCYP Networking Mixer, Hutchinson Clinic, 514 Cleveland, 5:30-7:30 p.m.
- 14-15... Hunters Breakfast at Great Bend Coffee, 2015 Lakin, Buffet Opens at 4 a.m.
- 14... Dominican Sisters Annual Mission Bazaar, 3600 Broadway, 7 a.m. to 2 p.m.
- 15... Submission Deadline for December Issue of Outlook Business Journal
- 16-17... GBRC Defensive Driving Course, Activity Center, 2715 18th, 5:30-9 p.m.
- 18... Dress Down the Town for United Way, Participating Businesses
- 19... Flyer Insert Deadline for December Issue of Outlook Business Journal
- 19... Chamber Coffee: Farmers Mutual Insurance and Jensen & Associates, 16 N. Main in Ellinwood, 9:30 a.m.
- 20... Heartland Center for Spirituality Free Movie, 3600 Broadway, 6:15 p.m.
- 21... St. Rose Blood Screenings, 3515 Broadway, 6:30-10 a.m.
- 22... Frankie Valens Concert at First Christian Church, 5230 Broadway, 6 p.m.
- 24... USD 428 Education Foundation Dinner & Auction, Events Center, 6:30 p.m.
- 26-27... Chamber Office Closed for Thanksgiving
- 27... Light to Unite Holiday Hustle, Veterans Park, 6:30 p.m.
- Dec. 1... BCYP Christmas Party with a Purpose, Satellite Pros, 2823 10th, 6-8 p.m.

## RECURRING EVENTS

- Barton County Commission Meetings, Mondays, Courthouse Room 106, 9 a.m.  
 GBPL Maker Space Mondays, 1409 Williams, 4 p.m.  
 GBHHH Grief Support Group Meetings, 3520 Lakin, 6:30 p.m.  
 GBPL Baby and Me Activity, Tuesdays, 1409 Williams, 10 a.m.  
 American Legion Bingo, Tuesdays & Thursdays, 1011 Kansas Ave, 7 p.m.  
 GBPL Story Time, 1409 Williams, Tuesdays at 11 a.m., Friday at 10 a.m.  
 GBPL Quiet Study Session for Teens, Wednesdays, 1409 Williams, 3-9 p.m.  
 Argonne Bingo, 1123 Main Street, Wednesdays at 7:15 p.m., Sundays at 1:45 p.m.  
 Free Story Time at Everything Under the Son, Thursdays, 407 McKinley, 10 a.m.  
 GBPL "Magic" Gathering, Thursdays, 1409 Williams, 5 p.m.  
 GBPL Free Friday Movies, Fridays, 1409 Williams, 4 p.m.  
 Unwind with a Glass of Wine at Great Bend Coffee, Fridays, 2015 Lakin, 5-7 p.m.  
 Dinner Served at American Legion, Fridays, 1011 Kansas Avenue, 6 p.m.



**BRYANT** *Funeral Home*  
**CENTRAL KANSAS MONUMENTS, INC.**

1425 Patton Road  
 Great Bend, KS 67530  
 (620) 793-3525  
[www.bryantfh.net](http://www.bryantfh.net)

**"Protecting your health  
 and your property."**

- Commercial & Residential Services
- Pest & Termite Control

Since

- Monthly, Bi-Monthly or Quarterly Visits
- Real Estate Inspections

**SCHENDEL**

800-591-7378  
[SchendelPest.com](http://SchendelPest.com)

1947

**Pest  
 Services**



**Heart of Kansas  
 Family Health Care, Inc.**

Phone: 620-792-5700  
 1905 19th, Great Bend

**Family Practice & Mental Health Services**

Preventative Care • Prescription Assistance • Diabetes Management Evening  
 Appointments • Open to Everyone • Bilingual Staff  
 All Insurance Accepted - Including Medicare, Medicaid & KanCare

*"We Care about your Health"*

[www.HeartofKansas.com](http://www.HeartofKansas.com)

**COMFORT PRO INC.**

**Heating • Air Conditioning  
 Plumbing • Certified Radon Testing**



**bryant**

Furnaces  
 Perform 90%  
 + Efficiency

Great Bend: 620-793-4208  
 Larned: 620-285-3966  
 Toll Free: 800-937-3030

# DAWSON Jewelers

## Putting Customers First for 25 Years

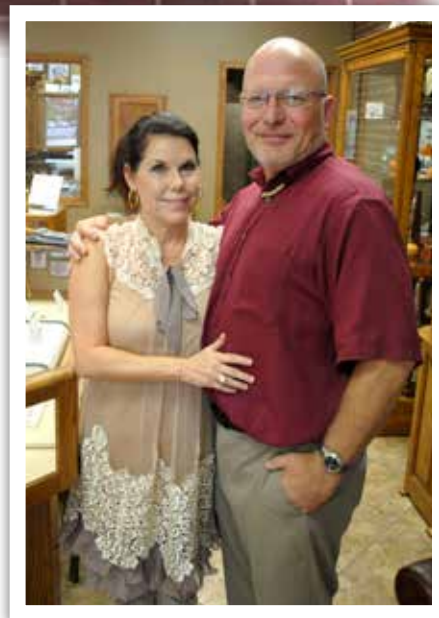
When Diana Dawson talks about the importance of customer service, her sincerity is obvious. She even offered an anecdote to demonstrate she will go the distance for a customer. A man came into Dawson Jewelers Designs by Dana, 1301 Main, which Diana owns with her husband, Dana. The man was not happy. His ring didn't fit. He threw a credit card at Diana and walked out.

"He was right; the ring was huge on him," Diana said. "It was our mistake and we wanted to make it right. I called him and he hung up on me. I sent him a text. Then he told me he had cancer and wanted his life back," Diana continued. "He just wanted someone to listen to him; he wanted to matter. I got what he was saying and I even welled up. You can say you strive for customer service or you can do it. We try to do it.

"I want to develop relationships with people, and it is not unusual for me to give someone my cell number," she elaborated. "It is the little things that count."

While Dawson Jewelers has a wide variety of rings, bracelets, necklaces, watches and other items in stock, it is known for its custom work. "If someone sees a picture of a ring, for example, we can tweak the design so it is their own," Diana said. "No one else will have that one; this is important to us."

The business employs three jewelers on site who can do it all, with the exception of the "lost art" of watch repair, Diana said, explaining watches are fixed by the manufacturer.



The Dawsons became owners of the downtown store on Aug. 1, 1990, after Dana's dad, Charles, retired. Dana fine-tuned his craft at the Texas Institute of Jewelry Technology. "After Dana's dad retired," Diana said, "we had a choice to go anywhere. We thought about Salina and El Dorado because in the 90s they were growing. Or we could stay in Great Bend.

"Dana is a tried and true Great Bend boy," she laughed, noting she is an Oklahoma girl. "So Great Bend was it."

After the first four months, Diana realized they could hire two employees and pay more than minimum wage. As the company grew, next came more employees, better salaries, health insurance, paid vacations and retirement plans. "I never thought in my wildest dreams we could provide all this for our family and employees," Diana said. "We take a lot of pride in this. We don't want to be part of a chain.

"If people didn't shop locally and support us, the results would have been much different," she added. "People say that shopping locally trickles down but it might not truly register with them. It really is true for us."

Back in the day, Diana noted, the main competition for Dawson Jewelers was local. Then there was more competition from Wichita and Kansas City. "Now our stiffest competition is the Internet," she said. "We are very active in social media and have got to keep on our toes."

This means staying current with new trends. For instance, pink gold and princess-cut diamonds are now popular. "We cannot stay stagnant," Diana emphasized. "We compete every day. Shopping for jewelry is like shopping for clothes."

At least for many women it is. Men are another story. Diana explained that men want to buy a present for an occasion or "to get out of trouble or just because. They don't want to look around. Men have a goal and about 85 percent of our business is men. They want to buy it, get it wrapped and take it home."

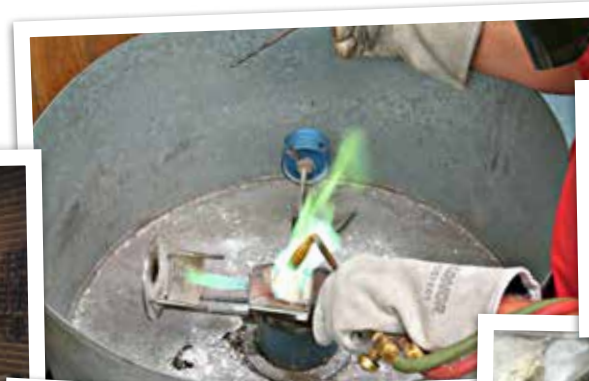
Some customers want to add the personal touch to a piece of jewelry, such as a photo of a child, pet or landscape – whatever they want.

"These can represent some of the happiest memories or some of the saddest," Diana said. "One of the most difficult was a parent who had lost a child. She came in around Christmas with a picture for a piece of jewelry; she wanted her son to remember his baby brother."

Diana said it is situations such as this that draw her closer to the store's clientele.

Hours are 10 a.m. to 5:30 p.m. Monday, Tuesday, Wednesday and Friday; 10 a.m. to 6 p.m. Thursday; and 10 a.m. to 4 p.m. Saturday. Other services include free cleanings; professional appraisals are performed in-house.

And don't forget the 100 Grand candy bar that customers have come to count on. "Some people thought this was a goofy thing to do," Diana said. "It is not goofy. I love getting razzed if I forget the candy. People have come to expect their 100 Grand." —



## American State Bank Named Strongest Bank

American State Bank and Trust Company has been named one of the top five strongest banks in Kansas by the Kansas City Business Journal.

The Journal studied 2015 mid-year numbers from every bank in the Kansas City Federal Reserve District based on size. The rankings were made in five categories: problem-loan ratio, Texas ratio, core capital ratio, equity capital and total loans and leases. Because of its strong core capital and its low percentage of problem loans, ASB ranked 2nd among the top 5 midsize banks with a loan portfolio of \$184.87 million.

While American State doesn't have any physical locations in Kansas City, it is part of the Kansas City Federal Reserve District. American State was ranked in the midsize bank category with total assets between \$250 million to \$1 billion.

Its parent company, American State Bancshares' total consolidated assets reached \$750 million at the end of June 2015. American State Bancshares' commercial banking subsidiaries include People's Exchange Bank and Rose Hill Bank. American State Bancshares has 18 locations in Augusta, Belleville, Clyde, Concordia, Garden City, Great Bend, Holcomb, Larned, Macksville, Rose Hill, St. John and Wichita.

## GBCF Hosts #GivingTuesday Events Dec. 1

#GivingTuesday is December 1st and Golden Belt Community Foundation is inviting area businesses, individuals, families, and organizations to join us in this world wide event! #GivingTuesday unifies charities, corporations, small business, and individuals from across the globe to show that the world gives as good as it gets.

On Tuesday, December 1st, Golden Belt Community Foundation is hosting a giving day to build local non-profit and community endowments. With matching funds of \$50,000, your gift will mean even more to local organizations. (Qualifying gifts will be matched on a proportional basis in relation to the total amount raised.)

Last year, more than 27,000 organizations in 68 countries came together to celebrate #GivingTuesday. The Golden Belt Community Foundation raised over \$127,000 on Giving Tuesday in 2014 – in one day. Over 40 non-profit organizations were able to reap the benefit of those donations and grow their endowments within the Golden Belt Community Foundation, thus building their sustainability.

Let us make it easy for you! On December 1st, simply bring your donation to Foundation office, 1307 Williams, from 8 a.m. to 6 p.m. or call us at 620-792-3000 and we will come to you! Smile for a photo opp. and a public thank you for your donation on our Facebook page.

If you're unable to join us on December 1st, mail your donation along with our Giving Tuesday Donation Form directly to the foundation before December 1st. Learn more at [www.goldenbeltcf.org](http://www.goldenbeltcf.org).

## Plains State Bank Welcomes Ibarra

Plains State Bank is pleased to announce the hiring of Roxanne Ibarra at their Great Bend Loan Production Office located at 2700 10th Street in Great Bend. Roxanne will hold the title of Deposit Operations and will use her banking experience to enhance the deposit operations area of the bank. Roxanne will primarily focus on bank operations, Data Processing, product development and customer service.



Roxanne has over 12 years of banking experience with expertise in teller duties, bookkeeping, and deposit operations. She enjoys working in the banking environment and assisting customers with their banking needs. Roxanne and her family are long time residents of Great Bend.

The Plains State Bank has four offices in Kansas located in Plains, Lakin, Great Bend, and Oakley. At Plains State Bank we are, "Financing Your Future" and our Employees, Officers and Directors are committed to our customers.

## Shafer Gallery Welcomes New Exhibit

"New Quilts from an Old Favorite 2015: Nine Patch"

Nearly everyone remembers sleeping under a quilt made by their mother or grandmother, and many of those quilts were made from time-honored traditional quilt designs. Today's quiltmakers were challenged by the National Quilt Museum in Paducah, Kentucky to create original quilts based on the classic Nine Patch block pattern. The Shafer Gallery is delighted to present "New Quilts from an Old Favorite 2015: Nine Patch," an exhibit of the 18 finalist and winning quilts by quiltmakers who responded to this challenge.

This exhibit will be on display at from November 13 through December 13 in the Shafer Gallery, inside the Fine Arts Building on the Barton Community College campus, 245 NE 30 Rd in Great Bend. These are not your grandmother's quilts! Quilters modified Nine Patch block designs in imaginative ways, providing a wonderful look at the skills, techniques and creativity of today's quiltmakers.

Contact Dave Barnes at 620-792-9342 or visit [shafergallery.org](http://shafergallery.org) for more information.



**10<sup>th</sup>**  
Anniversary  
NEXTECH wireless

**Stop in and Save!**

Nex-Tech | 3705 10th St.  
Great Bend | 620.792.3908

Nex-Tech Wireless is eligible to receive support from the Federal Universal Service Fund in designated areas. As a result, Nex-Tech Wireless must meet reasonable requests for service in these areas. Questions or complaints concerning service issues may be directed to the Kansas Corporation Commission Office of Public Affairs and Consumer Protection by calling 1-800-662-0027.

**CONCRETE SERVICE**

221 Baker St.  
Great Bend, KS 67530

For ALL your  
**CONCRETE CONSTRUCTION** needs!

**Owners: Roy & Dale Westhoff**  
Call: 620-792-2558

## Doonan Trailer Releases New Product

Doonan's long-standing tradition of innovation and quality made for the perfect partnership with one of America's industry leading boat builders, who required a fleet of trailers that met or exceeded the standards of its Company, set forth by its founder over a century ago. Doonan's advanced engineering and manufacturing processes were key in the design of a niche' series of 48' x 102" dropdeck trailers developed to haul either a load of boats lying flat, or a stacked load, standing at an angle on custom racks that fit a specialized stake pocket design.

Kelly R. Zecha, National Dealer Manager/Application Specialist, Doonan Specialized Trailer, shared "One of the many characteristics unique to Doonan® is that we don't just ask customers what they want. We provide customized, value-added solutions that we stand behind from design, to build, to final delivery and service." Zecha added, "Doonan's expertise in developing a cost-effective approach for this beloved American-made brand of boats assists them with creating the 'best boating experience' for its customers, for centuries more to come."

Learn more at [www.doonan.com](http://www.doonan.com), or contact Doonan's Manager of Marketing & Inside Sales Michael Hinton at 620-792-6222 ext. 270.



## USD 428 Foundation Hosts Dinner & Auction

Tickets are now on sale for the USD 428 Education Foundation dinner and auction set for Nov. 24 at the Great Bend Events Center. The event will begin with a social hour at 6:30 p.m.



The annual fundraiser helps raise money for minigrants that help supplement learning opportunities in classrooms district wide.

This year's theme for the evening is "Tastes of the Town" and will feature a walking dinner with samples from five different local caterers. The Great Bend High School Panther Jazz Band will provide entertainment.

Students from Great Bend High School's cabinet and furniture design class created a unique Ford Tailgate Bench with the help of their instructor, Travis Straub. The bench will be auctioned off at the dinner.

Ticket prices are the same as they have been since the first dinner in 1989 – \$50. They may be purchased individually or in tables of eight. Tickets may be purchased by calling Schartz at the District Education Center, 620-793-1500.

## Rifleman Centennial Celebration Nov. 7

This November 7th at 10 a.m., the community will celebrate the 100th anniversary of the dedication of "The Rifleman", an original bronze statue by noted American sculptor, Frederick C. Hibbard. To the north of the Barton County Courthouse, this likeness of a young man, about nineteen years of age, stands eternal guard in defense of the Union, rifle and bayonet at the ready. Dedicated to the members of Grand Army of the Republic, Pap Thomas Post 52, in Great Bend, this monument honors those who fought for the Union during Civil War.

In October, "The Rifleman" was professionally cleaned and restored. The conservation was performed by Ron Harvey, Principal at Tuckerbrook Conservation, Lincolnville, Maine, who has restored monuments and collections in national parks and museums across the country. This restoration was sponsored by The City of Great Bend and The Barton County Historical Society.

Sculptor Frederick C. Hibbard studied at the Art Institute of Chicago under Lorado Taft and, after serving as Taft's assistant, established a studio of his own in Chicago. With a career spanning forty-four years, Hibbard produced more than seventy major sculptures. Among the most significant are the monumental equestrian statue of General Ulysses S. Grant, which overlooks the battlefield at Vicksburg, Mississippi, and the Confederate Monument at Shiloh Battlefield in Tennessee. "The Rifleman"

was commissioned by Civil War veteran Ira D. Brougner of Great Bend, Commander of the Department of Kansas, Grand Army of the Republic, and a former member of the Kansas House of Representatives.



## Tickets Going Fast for Emerald Ball

The Emerald Ball will be held in the Schmidt-Bickle Training Center on the campus of Fort Hays State University at 6:30 p.m. on Saturday, November 21st. The gala will include a social, silent and live auctions, dinner, and a dance. Additionally, two awards will be presented. J. Basil Dannebohm, along with Dr. Mirta Martin, President of Fort Hays State University, will serve as the honorary event hosts. Wichita television personality Sierra Scott will emcee the gala. Scott will be joined on stage by Jenn Bates, co-anchor of KWCH Eyewitness News This Morning. Frankie Valens will perform during the event alongside Ron Neuman and the Diamonds Vocal Band. Formal attire. Learn more about the event and buy tickets at [www.myemerald.org](http://www.myemerald.org).

Teresa Malone, PT  
Megan Beahm, PT  
Dan Quillin, PT  
(620) 792-7868

**Advanced Therapy**  
& SPORTS MEDICINE

3715 10th Street in Great Bend, KS  
[www.AdvanceTherapyGB.com](http://www.AdvanceTherapyGB.com)

**KELLER**  
REAL ESTATE &  
INSURANCE AGENCY, INC.

"Serving Great Bend Since 1968"  
[www.kelleragency.com](http://www.kelleragency.com)

620-792-2128 or 1-800-281-2181  
1101 Williams, P.O. Box 945  
Great Bend, Kansas

**Community Bank**  
OF THE MIDWEST  
[www.communitybankmidwest.com](http://www.communitybankmidwest.com)

100% LOCAL OWNERSHIP 100% Committed to our community

Great Bend 620-792-5111 Otis 785-387-2241 Ness City 785-798-3950 Ellinwood 620-564-3700

**It's hometown banking  
with hometown people.**



## CSS Welcomes Two New Health Counselors

Debra Schartz-Robinson, LSCSW, and Nicole Parker Sutton, LSCSW, recently joined the Catholic Social Service staff providing Behavioral Health Counseling. "The addition of two therapists to the counseling staff is in response to requests for Behavioral Health counseling," stated Debbie Snapp, CSS executive director. "We get parents calling about counseling for children and pastors inquiring about marriage counseling for couples. The addition of Debi and Nicole will help with this underserved area in the community."

Robinson is a Licensed Specialist Clinical Social Worker. She has been working in the field for 25 years providing individual, family, group, and in-home family therapy to people across the lifespan; clinical supervision and consultation to professionals; and teaching at the Bachelor and Masters level. Robinson employs a strengths based systems approach and has specific training including animal assisted work, play therapy, and trauma treatment including Neurosequential Model of Therapeutics (NMT). She has experience working with children and adults who are suffering from anxiety and depression, adoptive family issues, emotional, physical and sexual abuse, victims of neglect, couples counseling, and attachment challenges.

Sutton is a Licensed Specialist Clinical Social Worker and Licensed Clinical Addictions Counselor. She received extensive training in the Neurosequential Model of Therapeutics (NMT) as the Lead NMT Clinician. She has significant training in nondirective play therapy, Theraplay, equine therapy, as well as cognitive behavioral variants. Sutton has provided group, individual, family, and in-home family therapy to people across the lifespan and has testified as a professional provider throughout her career. She specializes in working with victims of neglect; sexual, physical, and emotional abuse as well as those suffering from a wide variety of presenting problems.

Catholic Social Service Behavioral Health provides individual, family, group, and marriage therapy to children three-years-old and older, adolescents, and adults. CSS has offices in Great Bend, Dodge City and Garden City. In addition to Robinson and Sutton, the counseling staff includes: Amy Falcon, LBSW, Rhonda Goodloe, LMSW, and Hattie Stein, LAC, CSAT. For more information call 620-792-1393 or visit [www.catholicsocialservice.org](http://www.catholicsocialservice.org).

## Tune in to ChamberConnect Show Nov. 5th

Tune in to KVGB 1590 AM on the first Thursday of every month to hear Eagle Radio's Patrick Burnett discuss the latest Chamber happenings with Director of Sales & Member Services Andrea Bauer.



## Nex-Tech Wireless Celebrates 10th Anniversary

Over the past ten years, Nex-Tech Wireless has worked diligently to bring superior wireless service to Central and Western Kansas, while providing customers with a wireless experience that is truly "Something Different". The Hays-based company launched service on October 15, 2005 with 35 employees and 89 cell sites. The company rapidly grew into one of the most successful rural wireless providers in the country. Nex-Tech Wireless now employs over 120 employees, serves nearly 60,000 customers with 300+ towers and provides an economic impact of over \$6 million to local economies in Kansas through payroll and corporate philanthropy.



During this past year Nex-Tech Wireless has aggressively built-out its 4G LTE network with adding high speed data to over 50 sites, in addition to building nearly 10 new sites to enhance customer's wireless experience. Strategic partnerships have been implemented to provide customers with seamless coverage and high speeds both locally and nationwide.

New retail and authorized agent locations have been added in McPherson, Hutchinson, Inman, Abilene and Salina Mall in the last 12 months. Customers can now visit one of the 48 locations near them for assistance or contact the Nex-Tech Wireless Customer Care team, which is located in Hays.

The company aggressively expanded its portfolio of smart-phones in recent years with the addition of Androids and iPhones. Along with the evolution of technology, Nex-Tech Wireless has introduced home internet solutions, portable internet devices, tablets and fleet tracking. Additionally, Nex-Tech Wireless has adapted with the competitive landscape by offering customers nationwide shared data plans, unlimited data options, carryover data, no-contract plans and the opportunity for customers to upgrade as often as they choose. This year, Nex-Tech Wireless introduced PerKville, a program to reward its customers by earning points which can be redeemed for various discounts.

Nex-Tech Wireless has maintained its commitment to the communities it serves. In its 10th year of business, Nex-Tech Wireless introduced two scholarship opportunities at Fort Hays State University. Additionally, Nex-Tech Wireless partnered with the Kansas State Fair to become the Official Wireless Provider and the Official Sponsor of the Nex-Tech Wireless Grandstand.

For more information on Nex-Tech Wireless call 877-621-2600 or visit online at [www.nex-techwireless.com](http://www.nex-techwireless.com).

**Sage**  
Your local janitorial provider.  
800-825-5475  
[www.officialsageproducts.com](http://www.officialsageproducts.com)  
[sage@officialsageproducts.com](mailto:sage@officialsageproducts.com)

Entertaining Family?  
✓ You take care of their plans.  
✓ We'll take care of their comfort.

**Best Western**  
**BEST WESTERN Angus Inn**  
2920 10th Street • Great Bend, KS  
Take a virtual tour at [bwangus.com!](http://bwangus.com!)  
**620-792-3541**

**MURRAY**  
CHIROPRACTIC CENTER

"Therefore, if anyone is in Christ, he is a new creation; the old has gone, the new has come!"  
- 2 Corinthians 5:17

Danny Murray, D.C. • Sclic Murray, D.C.  
2100 Kansas Avenue • Great Bend, KS  
620-792-1386  
[www.murraychiropracticcenter.com](http://www.murraychiropracticcenter.com)



## United Way of Central Kansas

1125 Williams in Great Bend, KS 67530  
Office Phone: (620) 792-2403  
unitedwayofcentralks@hotmail.com

Submitted by Executive Director Julie Smith

## United Way Campaign Update

November is a busy month for the United Way of Central Kansas as they begin to wind down their annual campaign. Already at 45% towards the goal of \$275,000, UWCK will be a big presence in Barton and Pawnee Counties in the coming weeks!

It all starts with the annual Casino Night, sponsored by the Sidewinders in Ellinwood. This event starts at 7 p.m. on Saturday, November 7th and is a fun way to support the United Way. For a \$20 suggested donation at the door, you get either \$10,000 in chips or 2 raffle tickets. Then try your hand at poker, blackjack, roulette, and more. There will also be silent auction items (donated by our 19 Community Partner Agencies), raffle items, and 1 large item will be up for live auction at the end of the night. Join us at the Kansas Sidewinders Motorcycle Club in Ellinwood (21 N Main St) for a great night!

On November 18th, UWCK and The Buckle are bringing back "Dress Down the Town". This fundraiser encourages businesses in Barton and Pawnee Counties to have their employees wear jeans for the day, with a \$1 donation to UWCK. Every dollar you donate gets you a chance to win a pair of FREE Buckle jeans. One person from each participating business will be entered in the final drawing to win a new pair of jeans. To get your business signed up for this event, contact UWCK by email at [admin@uwck.org](mailto:admin@uwck.org) or give us a call at 620-792-2403 for your event stickers and entry slips. This event raised over \$2,600 last year with more than 40 businesses and 450 individual participating. Every dollar makes a difference!

To wrap up the month of November and get into the Holiday Spirit, UWCK will be encouraging our community to get active. Burn off those holiday calories by joining us on November 27th as we "Light to Unite-Holiday Hustle". This is a fun run and will not be timed, but there will be chances to win. Wear your ugliest sweater or adorn your bike, wagon, or stroller with lights and you will be in the running for Top 3 prizes in each category. Please see the enclosed flyer for more details and be a good elf, get signed up before November 14th to save \$5.

Be sure to follow United Way of Central Kansas on Facebook!



Committed to and  
Caring for the Community

514 Cleveland | Great Bend  
620-792-8833

[www.gbregional.com](http://www.gbregional.com)



BARTON COUNTY  
Young Professionals  
LEAD. NETWORK. VOLUNTEER.

Check out our NEW  
BCYP website:  
[www.bartonyop.com](http://www.bartonyop.com)

## Animal Medical Center Opens New Location & Hires New Team Member

The area's fastest-growing full-service animal hospital recently expanded its presence to the Ellinwood community. Animal Medical Center opened a new satellite clinic on October 20, 2015 and hired a new team member to manage operations at this location. "We are excited to welcome Casey Pohlman to the AMC team, and are confident that our clients will enjoy her friendly demeanor," says Dr. Nels Lindberg, co-owner of Animal Medical Center. "The newly renovated facility will allow us to make check-ups and regular appointments more convenient for our clients and their animals."

The Ellinwood satellite clinic's hours are 8 a.m. to 5 p.m. on Tuesdays and Thursdays with appointments being booked from 1-5 p.m. with a veterinarian on those days. Animals who need more urgent attention can always make an appointment at the Great Bend clinic and as always, the 24-hour on-call service is still available for emergencies after regular business hours.

Services include well-care appointments for companion animals, vaccinations, ear cleanings and treatments, dispensing cattle products and vaccines, refilling prescriptions, and more. Limited equine services are also available such as vaccinations and baseline exams if scheduled in advance. Any services unavailable at the Ellinwood Clinic can easily be referred to the Great Bend facility when needed.

Pohlman, the new AMC team member running the satellite clinic, is a proven animal lover with a passion for helping people. She was born and raised in Montana before moving to Ellinwood in 2006. She has been in the medical field helping the elderly since 1991, and operates a cow/calf operation with her husband, Alan, who also manages Barton County Feeders. They have five grown children, the youngest of which is 18 and attending Ellinwood High School. They also have three dogs, two cats, chickens, and ducks. "I am excited to connect with our Ellinwood and Eastern Kansas clients at our new satellite office," Pohlman says. "I have been a client for many years, and I look forward to interacting with other clients in my new role!"

Animal Medical Center offers full-service small and large animal care including vaccinations, spay and neuter surgeries, acupuncture, animal chiropractic, ultrasound diagnostics, cold laser therapy, surgical laser, digital x-ray, endoscopy, newly developed regenerative medicine, all aspects of bovine and equine medicine, surgery, consultation, and much more. Retail products for pet care and nutrition are also available, and they boast a clean open-hospital environment.

The Great Bend location is open Monday through Friday from 8 a.m. to 5:30 p.m. and Saturday 8 a.m. to noon with a 24-hour emergency service. The new Ellinwood satellite clinic is open Tuesday and Thursday from 8 a.m. to 5 p.m. with appointments for veterinarians from 1-5 p.m. on those days. For more information, visit [www.myamcvets.com](http://www.myamcvets.com), call 620-792-1265, or like Animal Medical Center on Facebook.





Celebrating 49 years of serving people with developmental disabilities.

*"The Choice for Growth."*

[www.sunflowerdiv.com](http://www.sunflowerdiv.com)



**DOVE** Chevrolet Buick Cadillac

*Your Silverado Truck Center*

4217 10th Street in Great Bend, KS

620-792-8266

See Steven, Marty or Rob for a **GREAT DEAL!**

[www.dovechevy.com](http://www.dovechevy.com)

## CHAMBER COFFEE SCHEDULE THURSDAYS AT 9:30 AM

**November 5, 2015**  
**Kansas Doors, Inc. • 5523 10th Street**

Providing sales, installation and service on your garage doors, operators, residential doors, replacement windows, vinyl siding & seamless guttering. We are proud to serve the entire state of Kansas with over 120 years combined experience.

**November 12, 2015**  
**World Pest Control & Sunflower Services**  
**Chamber Board Room, 1125 Williams**

World Pest Control & Sunflower Services is a locally owned and operated pest control business. We specialize in bed bug elimination with remedial heat and fumigation. We are also a Certified Sentricon Specialist for the Sentricon Colony Elimination System with Always Active Technology. Robert Trapp Sr has been managing the Sunflower Branch since 1991.

**November 19, 2015**  
**Jensen & Associates & Farmers Mutual Insurance**  
**16 N. Main in Ellinwood**

Please join us for this joint Chamber Coffee in Ellinwood. We look forward to welcoming you! [www.fmi-ks.com](http://www.fmi-ks.com) | [jensenassociatesinc.com](http://jensenassociatesinc.com)

**November 26, 2015**  
**No Chamber Coffee • Happy Thanksgiving!**

The Great Bend Chamber of Commerce & Economic Development will be closed on Thursday and Friday, November 26 and 27 for Thanksgiving. We will re-open Monday, November 30th.

**December 3, 2015**  
**First Presbyterian Church • 2400 Washington**

Called by God and guided by the Holy Spirit, the mission of the First Presbyterian Church, Great Bend, Kansas, is to worship God, grow in our knowledge of God's love, reach out to make new disciples, and commit our lives to Jesus Christ, our Lord and Savior. Sunday Worship at 10:45 a.m. - [www.fpcgb.org](http://www.fpcgb.org)



3307 10th Street • Great Bend, KS 67530

**McDonald's**

is providing coffee for Chamber of Commerce coffees.

Employment – Barton County	July 14	July 15
Labor Force	17,938	15,389
Employment	17,285	14,636
Unemployment	653	753
Unemployment Rate	3.6%	4.9%
KS Unemployment Rate	4.9%	4.6%

City/County Local Sales Tax Distributions Report	July 14	July 15
Sales Tax for Barton County at 1.00%	\$452,754	\$389,343
Sales Tax for Great Bend at 0.75%	\$244,229	\$216,861

Building Permits	July 14	July 15
Commercial – GB	7	7
Residential - GB	39	69

**Sources:**  
City of Great Bend, [www.greatbendks.net](http://www.greatbendks.net)  
Kansas Department of Revenue, [www.ksrevenue.org](http://www.ksrevenue.org)  
Kansas Department of Labor, [www.klic.dol.ks.gov](http://www.klic.dol.ks.gov)

