

A MONTHLY PUBLICATION OF THE
GREAT BEND CHAMBER OF COMMERCE

business journal

1921



YEARS 2021

GREAT BEND CHAMBER OF COMMERCE HOSTS SUCCESSFUL 101ST ANNUAL BANQUET & AWARDS

The Great Bend Chamber of Commerce hosted its 101st Annual Banquet & Awards on Saturday, February 25, 2023, at the Great Bend Events Center. This year's event brought together nearly 400 guests to celebrate and recognize the hard work and dedication of the business community over the past year. The evening's festivities began with a warm welcome from the chamber's President, Jane Smith, who expressed her gratitude for the hard work and commitment of the chamber members, and Eagle Radio's Matt Althouse as Emcee. Throughout the night, many chamber members were featured and highlighted for their contributions to the community.

During the evening, the following awards were presented:

NextGen Leader of the Year: Presented by the 2021 recipient, Chuy Loera, to this year's winner, Megan Hammek. This award recognizes a young professional who has demonstrated outstanding leadership and has made significant contributions to the community.

Citizen of the Year Award: Presented by 2018's recipient, Barry Bowers with Spectrum CPA, to Scott Donovan. This award honors an individual who has gone above and beyond in their service to the community and has made a significant impact on the quality of life in Great Bend.

Business of the Year Award: Presented by Maggie Harris, Barton Community College Chief Communications Officer, to Dry Lake Brewing. This award recognizes a local business that has shown exceptional growth, innovation, and community involvement.

The Legacy Award: Presented by Josh Gant, Director of Ancillary & Support Services at the University of Kansas Health System in Great Bend, to Golden Belt Community Foundation. This award honors an organization that has made a lasting impact on the community and has demonstrated a commitment to improving the lives of its residents.

We would like to extend our congratulations to all the award recipients

and thank them for their contributions to the Great Bend community. Their hard work and dedication are an inspiration to us all. Guests were treated to a delicious dinner of smoked pork tenderloin by A&G Catering, accompanied by scalloped potatoes, green beans, and homemade bread by Great Bend Coffee. Each table was set with a charcuterie board, salads, and desserts by RePerks/Tellers. The food was a highlight of the evening and received rave reviews from guests. The Mirror of Memories Star Photobooth, created by Rana Lune Boutique, was a hit with guests, who enjoyed taking photos against the beautifully crafted backdrop. Josh Blankenship Media created the video graphics and the printed program, adding to the professional and polished atmosphere of the event. Shelly Arnberger assisted with decor, and Charlie's Place provided the bar services, ensuring that guests had a great time throughout the night. The Jay Bennett Jazz Band provided live music throughout the evening, adding to the celebratory and lively atmosphere of the event. The energy and excitement in the room were palpable as guests mingled, networked, and celebrated together.

The Great Bend Chamber of Commerce would like to extend its sincere thanks to all those who contributed to the success of the event. The 101st Annual Banquet & Awards was a night to remember, and we look forward to continuing to celebrate and support the businesses and individuals who make our community great. Many thanks to this year's Presenting Sponsors: Barton Community College, Spectrum CPA, and the University of Kansas Health System in Great Bend; Chamber Ally and Experience Sponsors: First Kansas Bank, Equity Bank, Great Bend Tribune, and Nex-Tech. Special event sponsors included TCI Answering Service and KanEquip. For a full list of sponsors, and more information on the event and award winners, visit www.greatbend.org.



Marketing Maven Launches New Grown Up Spirit Week Promotion

Most schools across the country host spirit weeks leading up to homecoming games or other important milestones. But why does the fun have to stop when we become adults? Local creative firm Marketing Maven Consulting is excited to announce the launch of a new nationwide promotion called Grown Up Spirit Week, giving workplaces the opportunity to have some fun and make memories as a team. The first ever Grown Up Spirit Week will take place March 27-31, 2023.

“We are hoping this light hearted idea will spread across the country, and are sponsoring some cool prizes to incentivize people to jump on board,” says Rachel Mawhirter with Marketing Maven. “There are prizes for every day of the week for the best team photos, as well as individual prizes for best costumes.” Teams of up to 30 people can register at no cost to participate, with fun themes for each day of the week. Those will change from year to year, but for this first event, the themes will include Pajama Day, Decades Day, Sports Day, “The Office” Day, and Company Colors Day. Teams can participate in one or two days, or all of them. It’s up to each team how many days they want to dress up for. Throughout the week, teams upload their photos to social media and tag Grown Up Spirit Week to be entered for the daily and weekly prizes. “Research shows that employees who have fun at work are more engaged and have lower turnover,” Mawhirter says. “We hope employers leverage this free opportunity to create fun in the workplace and build camaraderie amongst their teams.”



For more information or to sign up a team for free, visit www.grownupspiritweek.com or search #grownupspiritweek on social media. Every team captain will be provided with a flyer and other resources they can circulate around the office to recruit participants. Teams are also encouraged to follow Grown Up Spirit Week on all the major social platforms.

‘Earth Day Celebration’ Back at Great Bend Zoo on April 22nd, 2023



Approximately 1,600 people attended the inaugural Great Bend Earth Day Celebration, held last year at Great Bend Zoo. Such a successful event begs the question, what can be done for an encore? Earth Day Celebration organizers are ready to embark on that challenge! Three Great Bend businesses, located on north Main Street, are joining efforts once again to host Great Bend Earth Day Celebration this spring at Great Bend Zoo. The Zoo, Rosewood ECycle, and Great Bend Dairy Queen have scheduled the event for April 22 from 11 a.m. to 2 p.m.

“Last year was so incredible that it will be hard to match those numbers again,” said Great Bend Zoo Curator Ashley Burdick. “But I’m confident we will have another successful event, and even have the opportunity to offer more this year, compared to last year.” Great Bend Earth Day Celebration benefited last year by Smoky Hills PBS incorporating its ‘Family Fun Day’ into the event that included an appearance by Curious George who met and mingled with children. He was a popular draw to go along with booths and activities by Rosewood ECycle, Heartland Farm, Kansas Wetlands Education Center, Great Bend Zoological Society, Women for Kansas, and the ‘Read With Me’ program in Great Bend. Many of those same vendors have expressed interest in returning for this year’s Earth Day event, which is geared toward children, but all family members are welcome to participate. Great Bend Dairy Queen will once again issue a coupon for a free kid’s cone to all youth participants that day. “We’re excited that many of last year’s vendors have committed to returning this spring,” said Burdick. “We encourage other businesses and organizations to sign up and celebrate this day with us. We anticipate a lot of children and families will attend again this year.” Burdick said Great Bend Zoo can supply tables for vendor booths. In case of inclement weather, the staff will also offer indoor vendor space. Great Bend Earth Day Celebration, which occurs on the official 53rd anniversary of Earth Day, is a come-and-go event that is free to the public. Businesses and organizations that want to participate in the celebration can contact Burdick at 620-793-4226, or e-mail her at zoocurator@greatbendks.net. The deadline for booth sign-up is April 1.



GREAT BEND
CHAMBER OF COMMERCE

**SHOP TALK IN 60:
SWOT AND YOUR
BUSINESS**

**TUESDAY, MARCH
21ST @12PM**



REGISTER HERE



Committed to Caring for the Great Bend Community

Providing the Great Bend community greater access to the resources of the only academic health system in Kansas. Together, we are committed to ensuring the continued well-being of this community, close to home.

kansashealthsystem.com/greatbend

Ribbon Cuttings!



Mattress Solutions

Millers of Claflin, a family-owned business that has been serving Kansans since 1903, is proud to announce the grand opening of their newest addition, Mattress Solutions. The opening was celebrated with a chamber coffee and ribbon-cutting ceremony hosted by the Great Bend Chamber of Commerce. With over 50 mattresses on display and numerous massage chairs, Mattress Solutions offers the most complete mattress gallery in the state of Kansas. The company has been servicing the entire state of Kansas with monthly deliveries to Oklahoma, Colorado, Nebraska, and Missouri. “We are excited to bring Mattress Solutions to Great Bend and offer our customers the best selection

and price range that fits all budgets,” said the fifth generation of Millers to join the family business. “We pride ourselves on our knowledgeable and caring sales staff and our reputable delivery teams, who have been with us for 30 years or longer.” Employing 90 people, Millers of Claflin continues to grow, and with the addition of Mattress Solutions, they are expanding their reach and service to more Kansans. The company has been in business for 120 years and is committed to providing quality products and excellent customer service. Visit Mattress Solutions at 1319 10th Street in Great Bend, and experience their exceptional service and products.



Legacy Financial Solutions

Legacy Financial Solutions, formerly known as Hiss Sherman Wealth Management, has undergone a rebranding to better align with their mission and values. The company, which is committed to providing exceptional financial guidance to clients, celebrated their new look with a Chamber Ribbon Cutting and Chamber Coffee hosted by the Great Bend Chamber of Commerce. “Our steady growth over the past few years has brought us new clients, teammates, locations, and opportunities. It was time to create a brand that could grow with us and ultimately equip us to better serve our clients,” says Matt Hiss. Legacy Financial Solutions offers a unique approach to financial planning, which is reflected in their four main areas of expertise: Investment Management, Retirement

Planning, Multi-generational Wealth Planning, and Strategic Business Planning. They have a team of financial professionals with varying levels of expertise, allowing them to tailor their clients’ plans to better pursue their goals. Marketing Coordinator Dena Hiss elaborated on the rebrand, stating that everything has been streamlined to better reflect the company’s unique process of serving clients. Legacy Financial Solutions’ mission is to equip clients to fully pursue, build, and achieve their own personal legacy. The company has helped clients across 21 different states over the past 36 years and serves over 1,000 clients nationwide. To learn more, visit legacyfinancialsolutions.com or find them on Facebook.

Outlook Business Journal

A monthly publication of the

GREAT BEND

CHAMBER OF COMMERCE

1125 Williams,
Great Bend, KS 67530
Phone: 620-792-2401
Fax: 620-792-2404

www.greatbend.org

EXECUTIVE COMMITTEE

Chair
Shelly Peacock, TCI Answering Service

Vice Chair
Robert E. Bauer, Bauer Pike Law

2nd Vice Chair
Scott Dewerff, KanEquip

Immediate Past Chair
Jerry Renk, Retired

Treasurer
Barry Bowers, Spectrum CPA Partners

BOARD OF DIRECTORS

Joe Andrasek
Damm Pipe Testing

Jim Blackwell
Clara Barton Medical Center

Wally Eldridge
Eldridge Fencing

Jeremy Elliott
myLawn! Turf & Tree

Chuck Fellhoelter
People’s Bank and Trust

Randy Goering
Retired

Ana Hayson
Rana Luna Boutique

Mike Johnson
M and M Equipment Company

Matt Kurtz
Identifications

Mark Mingenback
MyTown, LLC

Regan Reif
University of Kansas Health Systems

Cammie Vaupel
American Plains Co-op

Jim Vopat
Edward Jones

EX-OFFICIO

Tory Marie Blew, Designated Legislator

Cody Harris, Ambassador Club (Sunflower Diversified Services)

Sara Aramberger, Great Bend Economic Development

Christina Hayes, Great Bend Convention & Visitors Bureau

Dr. Carl Heilman, Barton Community College

Shawn Hutchinson, Barton County Commission

Lindsey Krom-Craven, City of Great Bend Council

Jessy Kirmer, BCYP

Khris Thexton, USD 428

CHAMBER STAFF

Megan Barfield, President/CEO
Ashley Hickman, Office Manager
Edith Solorzano, Communications Coordinator

Edward Jones

> edwardjones.com | Member SIPC



Retirement solutions for you and your employees.

Kris Sundahl
Financial Advisor
2016 19th St.
Great Bend, KS 67530
620-603-0340

Jim Vopat
Financial Advisor
2421 10th St.
Great Bend, KS 67530
620-792-5095

Jim Armatys
Financial Advisor
Todd Armatys
Financial Advisor
1904 Broadway Ave.
Great Bend, KS 67530
620-793-5481

MKT-5894L-A-A1 AECSPAD

People on the Move

Mary Sloan Retires from Farmers Bank and Trust

Farmers Bank and Trust announces with warm wishes the retirement of Mary Sloan, effective January 20th, 2023. Mary joined the bank and worked in the Albert office in 1987 and has been instrumental in the proof department over the years, particularly in the protection of customers and the bank. Mary was promoted to AVP and manager of the proof department carrying out many critical functions of the bank, such as wire and electronic transfer, (ACH) processing, debit card and monitoring disputes.



Mary managed the Proof Department with a long-tenured team of employees from 29 years, 25 years, to 21 years and her own tenure of 35 years. With collaboration and teamwork they have managed a variety of changes in the industry, from regulatory changes to an increasing battle against fraud and scams. She has been a valuable resource for the bank.

Employees and Directors honored Mary for her contributions in a farewell reception in January, 2023. We extend our best wishes to Mary as she starts her new endeavors and enjoys retirement.

Great Bend Recreation Commission Welcomes Henry

The Great Bend Recreation Commission is excited to welcome Joe Henry to the Rec team as the Business Director. Joe is married to his wife, Lindsey, for 17 years and together they have two smart and energetic girls, Lily (13) and Elise (10). Their transition from Colorado to Kansas began in 2021 and they are pleased to establish ourselves in central Kansas. Joe looks forward to building strong relationships within our community, and is excited to join an already impressive team at GBRC. The Business Director role allows him to marry his greatest strengths and foster those skills for the betterment of our community. Joe's strong conviction in pursuing a "dream job" is discovering an organization that allows passion and personal values to merge. He considers himself fortunate in joining GBRC, an organization that aims for this sentiment while striving for excellence in improving the lives of our community members through recreation and he has an incredible opportunity to be part of that mission. Joe was born in McPherson, KS and moved to Loveland, Colorado when he was six. His entire life was built surrounded by recreation and outdoors where he became involved in hiking, cycling, rock-climbing, camping and organized team sports. Joe loves people, values togetherness, and believes we are healthier in connection with one another. Joe has over 20 years of business experience and received a bachelor's degree in Sociology and Family Studies from the University of Northern Colorado, as well as a master's degree in Psychology from Colorado Christian University.



Magna Dry New Location

Magna Dry has moved to our new location. 1724 North Main. Our new location has an expanded office area and a larger shop and warehouse to accommodate our supplies and equipment. Come by and see us, have a cup of coffee and see what's new at Magna Dry.



Comfort Pro Inc.
HOME & GARDEN SHOW
MARCH 25TH
FROM 9 - 4 | AT THE EVENT CENTER |
COME LEARN MORE ABOUT OUR STARTING LINEUP.
WIN \$1,000
TO SPEND AT A HOME SHOW VENDOR
SPONSORED BY EAGLE RADIO AND COMFORT PRO.
COMFORTPROKS.COM | 620-793-4208

HIGHLIGHTED EVENTS IN MARCH

- 1...Open House & Ribbon Cutting: Shull Construction, 1004 Roosevelt, 8am-4pm (Ribbon Cutting: 12:30pm)
- 1...Victory Garden of Barton County: Spring Garden Basics, Barton County Historical Society (85 US Hwy 281), 12pm
- 2...Chamber Coffee: Pilot Club, Perkins (2920 10th St.), Doors open at 9am, Program at 9:30am. Can't make it? Watch online on the Chamber's Facebook Page or Youtube Channel.
- 3...Shafer Art Gallery Exhibit Reception, BCC (245 NE 30 Rd.), 6:30pm
- 8...Victory Garden of Barton County: Spring Garden Basics, Barton County Historical Society (85 US Hwy 281), 12pm
- 8...Barton County Young Entrepreneurship Challenge, Events Center, 12pm
- 9...Chamber Coffee: Sunflower Bank, 3600 10th St., Doors open at 9am, Program at 9:30am. Can't make it? Watch online on the Chamber's Facebook Page or Youtube Channel.
- 9...Ribbon Cutting: Sunflower Massage, Great Bend Chamber of Commerce, following the coffee.
- 10...VFW Post 3111 Karaoke Night!, VFW Post 3111 (504 Washington St.), 9pm
- 13-17...USD 428 Spring Break
- 15...Victory Garden of Barton County: Spring Garden Basics, Barton County Historical Society (85 US Hwy 281), 12pm
- 16...Chamber Coffee: Cottonwood Extension District, 3007 10th St., Doors open at 9am, Program at 9:30am. Can't make it? Watch online on the Chamber's Facebook Page or Youtube Channel.
- 16...City of Great Bend, St. Patrick's Day - Ladies Night Out, Visit participating stores, 4:30pm-7:30pm
- 18...Laundry Love, Discount Laundry (924 Jefferson St.), 10am
- 19...VFW Brunch, VFW Post 3111 (504 Washington St.), 9:30am
- 21...Shop Talk in 60, Great Bend Chamber of Commerce (1125 Williams St.), 12pm
- 22...Victory Garden of Barton County: Spring Garden Basics, Barton County Historical Society (85 US Hwy 281), 12pm
- 23...Chamber Coffee: CKCA, 215 Mckinley St., Doors open at 9am, Program at 9:30am. Can't make it? Watch online on the Chamber's Facebook Page or Youtube Channel.
- 24...Military and First Responders Night Out, 916 Williams St., 6pm
- 28...Ribbon Cutting: Kelly's Garden Sense, 134 NE 10 Ave., 10am
- 29...Victory Garden of Barton County: Spring Garden Basics, Barton County Historical Society (85 US Hwy 281), 12pm
- 30...Chamber Coffee: Dropping 22, 916 Williams st., Doors open at 9am, Program at 9:30am. Can't make it? Watch online on the Chamber's Facebook Page or Youtube Channel.
- 30...20th Annual Pancake Feed & Car Giveaway, Prince of Peace Parish Center (4100 Broadway Ave.), 4pm

Recurring Events:

Great Bend City Council Meetings, 1st & 3rd Mondays, City Hall, 1209 Williams, 6:30 pm
Barton County Commission Meetings, Wednesdays, Barton County Courthouse, 1400 Main St, Rm 106, 9am.

GREAT BEND
CHAMBER OF COMMERCE

WELCOME
to Our **NEWEST**
Chamber Members

JON PRESCOTT

jon.prescott@outlook.com
Ellinwood, KS
Retired

ACCIONA ENERGY

Adam Stratton
astratton@acciona.com
(312) 502-5433
55 E Monroe St. | Chicago, IL
Utilities

ADVANCE TRUCK & DIESEL LLC

Nathan Degenhardt
advancediesel72@gmail.com
(620) 639-5801
5801 Anchor Way. | Great Bend, KS
Auto Service & Repair

VONFELDT, BAUER, VONFELDT CERTIFIED PUBLIC ACCOUNTANTS

Kaitlin Sill
admin@cpavbv.com
(620) 285-2107
818 Broadway Ave. | Larned, KS.
Accountants - Certified public

New?

*Submit Your News
Here!*



No formal press release? No communications department? No problem! Simply scan and let us know what's going on in your business, and we'll do the rest!

About The Award Winners!



**2022 Business of the Year:
Dry Lake Brewing**

Dry lake Brewing has only been open for about two years now, and it's already a challenge to think of Great Bend without it. It has cemented itself as the prime place for locals to get together for a pint and/or cocktail or grab a bite to eat from one of the many amazing food trucks that frequent the back parking lot. When someone strolls through the DLB door, they can be assured they will be well taken care of by the staff because at this brewery they not only serve up drinks, but they also aim to serve up a memorable experience every time. This experience is something that founders Ryan Fairchild and Kevin Burkey keep at the forefront of their minds when they plan or produce anything at DLB.



**2022 Legacy Award:
Golden Belt Community Foundation**

Central Kansans probably didn't realize it at the time, but in the early days of establishing the Golden Belt Community Foundation (GBCF) they hit the trifecta. While countless local individuals and businesses are responsible for GBCF's success, three groups of community members came together at just the right time. They are the 37 founding donors, first board of directors and the Kansas Health Foundation (KHF). Christy Tustin, executive director, said the three groups that helped create GBCF "set us up for success. This started in 2001 when the Kansas Health Foundation became involved in community philanthropy by helping build and support community foundations. "The Kansas Health Foundation said 'if you raise \$300,000 in seed money, we will match it dollar for dollar.' The founding donors stepped up and made this happen."



**2022 NextGen Leader:
Megan Hammeke**

Just taking a glance at Megan Hammeke's title at the Great Bend Recreation Commission could be seen as an indication of why she was selected for the Great Bend Chamber of Commerce NextGen Leader Award. As marketing, aquatics and program director, Hammeke's reach extends throughout The Rec and into the community. Chris Umphres, The Rec director, like others in the community, was not surprised that Hammeke was honored with the award. "Megan is very involved in her hometown community, and is well-liked and respected," Umphres said. "She does a great job and doesn't have to be micro-managed. She knows what to do and just does it. Megan has a real passion for her work.



**2022 Citizen of the Year:
Scott Donovan**

When Scott Donovan's name was mentioned as a possible nominee for the Great Bend Chamber of Commerce Citizen of the Year Award, Barry Bowers said it was "almost embarrassing" that Donovan hadn't yet received this recognition in the past. Bowers, a close friend of the award winner, noted that Donovan's energy and community involvement more than qualify him for this honor. "And, on top of that, he is just an all-around good guy," Bowers said. "He would do anything for you; it is just the kind of person he is. You don't hear negative comments about him." Donovan specializes in sales at Eagle Radio and his background is chock-full of service on local boards and committees. His real name is Darrel Bieker, but because he is Scott Donovan while on the air, that is how most people know him.

Read The Full Award Stories On Our Website! Scan the QR Code!



BEYOND THE HORIZON

Barton Community College Reaches A \$500,000 Savings Milestone With Reduced or Eliminated Textbook Costs

As Barton Community College welcomed the start of 2023, it also welcomed a significant milestone in its efforts to help students save additional dollars. In total, students who have enrolled in classes with no-cost or low-cost course materials have saved over \$500,000. These courses are known in higher education as Open Educational Resources (OER). Director of Innovation and Compliance Lee Miller has spearheaded the OER initiative since its inception in 2019. "With much anticipation, we did make and surpass the half-million-dollar marker in student savings as of the beginning of this year," she said. "At this moment, student savings total over \$577,000. OER is a tool. It's not the goal. We are committed to focusing on ongoing OER integration with faculty to improve, invest and advise on course design options and innovative teaching methods."

At Barton, OER-certified courses are identified with one of three markers:

- No-cost (NC) – No course materials.
- Low-cost (LC) – \$50 or less for course material costs.
- Open Textbook (OT) – Courses use an open textbook to remove/reduce textbook costs but may require additional course material expenses above the \$50 low-cost threshold.

These markers (NC, LC or OT) are used to notate OER courses for easy identification for students when enrolling.

Cost savings are determined using a conservative estimate of \$100 saved per student per textbook or resource per course. Miller said this is an estimate adopted from research that the Kansas Board of Regents OER steering committee also used for a similar proposal. "As with all good things, things must change and continue to grow," she said. "With continued instructional support and faculty engagement, we continue to work toward creating low-cost degree options to further address affordability and access to higher education for all students." For more information, contact Miller at millerle@bartonccc.edu or (620) 786-7453.

BARTON
COMMUNITY COLLEGE

PVCH Cardiac Rehab Patient Shares Information During Heart Month



After it was discovered that Jack Stewart's aortic valve was functioning at only 20 to 40 percent efficiency, a valve-replacement surgery was performed last year. Today, the 74-year-old Larned man is "living a much more active lifestyle and enjoying life much more."

Stewart gives much credit for his recovery and positive prognosis to Cardiac Rehab services at Pawnee Valley Community Hospital (PVCH), 923 Carroll. He shared his story in observance of American Heart Month in February. "I acknowledge I was somewhat skeptical about rehab at first but soon realized the benefits," Stewart said. "I really appreciated the professional way I was treated, as well as the attention to detail and dedication to each patient to accomplish their goals. "These Cardiac Rehab professionals not only help you meet your immediate goals but also develop a plan to attain future heart-healthy objectives." Stewart noted his appreciation to Dusty Thacker, PVCH director of Cardiopulmonary Services, and Wayne Wilcox, registered respiratory therapist. From June 20 to Sept. 2 last year, this team guided Stewart through a rehab regimen that included exercises involving the Nu Step bike and the arm ergometer. "I truly appreciate the time this great team spent with me," Stewart commented. "They made each visit to rehab fun and full of laughter, while maintaining an atmosphere of professionalism. Rehab is not always fun but they made it fun for me. I would recommend our hospital's Cardiac Rehab to anyone."

Thacker noted that Stewart "was a model patient. He was always on time and eager to start exercising. Jack also was interested in the education we provided. Patients such as Jack make it easy to come to work every day. "Most people think of Cardiac Rehab as just exercise," Thacker added. "While it is a big component, rehab is so much more. It includes education and resources to help you make heart-healthy choices, along with emotional support." Benefits include strengthening the body, reducing the risk of hospital re-admission, and improving quality of life and mental health. Cardiac Rehab cares for patients with varied diagnoses. The team supports those who have had open-heart surgery such as a coronary bypass graft, valve replacement and even a heart transplant. "We see patients that have less invasive procedures too," Thacker noted. "These include a transcatheter aortic valve replacement and angioplasty, which involves stent placement. Those with heart failure may also qualify for rehab." Cardiac Rehab usually sees patients on Mondays, Wednesdays and Fridays. Depending on the circumstances, rehab can last for 12 to 18 weeks. "If a patient is uneasy about what to expect, we do our best to ease their worries and answer their questions," Thacker said. "This usually starts with a phone call. After they come for the initial intake and first session, they usually feel better. "And once they meet our respiratory therapists and patient-care coordinators, they really get to see what the program is all about. Most are happy to continue with rehab." In some cases, patients believe they can perform rehab on their own. "However," Thacker noted, "they usually come around after they experience firsthand the education and resources available to them."

Pawnee Valley Community Hospital, 923 Carroll in Larned, is a 25-bed facility, offering many services not typically available in a smaller facility. Included are 24/7 emergency care; acute, skilled and specialized nursing; surgery; high-tech imaging and laboratory tests; wound care; rehabilitation; and sleep and diagnostic center. The Pawnee Valley Medical Associates clinic, 713 W. 11th, provides the full range of family-medicine services; physician-assisted weight loss; and women's health services. The hospital's number is 620-285-3161; the clinic's number is 620-804-6007.

PAWNEE VALLEY 
COMMUNITY HOSPITAL
A HAYSMED PARTNER

MyLawn! Turf & Tree Partnering with Kansas WorkforceONE to Avert Seasonal Layoffs

MyLawn! Turf and Tree serving central Kansas was facing seasonal layoffs. Jeremy Elliott, owner, and Athan Thompson, Salina Manager, began looking for ways to avoid laying off employees and approached Tucky Allen at Kansas WorkforceONE. Recognizing that cross training current team members would increase employee skills and value, Tucky introduced Jeremy and Athan to our Lay-Off Aversion Program. "The Lay-Off Aversion Program would allow us to reimburse My Lawn! up to \$3000.00 for each employee giving them the opportunity to train team members to develop new skills instead of laying them off during the winter months," explained Tucky. "My Lawn's focus is on turf and tree health, but they offer a plethora of additional services including lawn mowing, shrub and bush pruning, turf seeding, holiday decorations, snow removal and much more."

My Lawn! is currently cross training all 8 team members within all of their service categories. "The biggest impact the Layoff Aversion Program has had on our company is each team member will add more valuable to the company and to themselves," explained Jeremy. "This will help them grow and be more confident to take care of the customer's needs. They can reach the potential they never thought they could."

Technicians will become trained in new areas of business allowing them the ability to work in other areas, furthering their duties throughout the season. An arborist will learn how to remove snow and hang Christmas lights while a lawn applications technician will learn tree health and shrub pruning techniques. "This helps soften the load as we improve our team members lives. It's difficult to stay afloat in the offseason but this program is certainly helping us." MyLawn!'s commitment and dedication to their team and keeping them working versus laying them off is shaping up to be a picture-perfect Lay-Off Aversion Project. For more information about Lay-Off Aversion, contact Tucky Allen at tucky@kansasworkforceone.org.



Heartland Farm Upcoming Workshops:

First, learn to brew, and sample some, too! Heartland Farm will be offering a two-part Beer Brewing 101 workshop on Wednesday, March 8 and Wednesday, March 22 from 6:00-9:00 p.m. at the Farm! Fee: \$60 per person. Ages 21 and up.

In this two-night workshop you will:

- Learn the basics of brewing beer.
- Work with equipment and required ingredients and follow a recipe as we brew our own batch.
- Learn the types of beer and taste the differences between sample beers.
- Decant the batch and bottle the beer.

Second, on Saturday, March 18 from 2:00-5:00 p.m., learn about cold frame season extension and how to thrift or recycle materials to build your own. Then, get some hands-on experience with tools and lumber as we build one from scratch! Fee: FREE!

Heartland Farm is an easy 13 miles west of Great Bend. Take 10th Street west for approximately 12 miles. Continue west on to the dirt road (X Rd) for 1 mile to CR 390. Turn south on to CR 390 for 1/2 mile. Heartland Farm is on the right hand (west) side.




**Wednesday, March 8
AND
Wed., March 22**
6:00 p.m. - 9:00 p.m.
\$60 per person

Beer Brewing 101
How to Brew

Learn to brew your own beer at home!
For more information, see
<https://heartlandfarm-ks.org/beer-brewing-101>





1049 CR 390
Pawnee Rock, KS 67567
hfarm@gbta.net
heartlandfarm-ks.org



Sat., March 18
2:00 p.m. - 5:00 p.m.
FREE!

Learn about cold frame season extension and how to thrift or recycle materials to materials to build your own. For more information, see <https://heartlandfarm-ks.org/cold-frame-workshop>.



KICKBALL
LET'S KICK THE HABIT
GRADES 6TH-12TH



REGISTER YOUR TEAM TODAY!
WWW.CKPARTNERSHIP.ORG
SATURDAY, MARCH 25TH
STARTING AT 1:00PM
GREAT BEND SPORTS COMPLEX
41 MCKINLEY ST, GREAT BEND, KS 67530

"Kick the Habitat" Youth Kick Ball Tournament

Youth Crew is putting on an event to raise awareness of the effects vaping has on our mental and physical health. Youth Crew is providing a fun activity for students while also gathering education about the harmful impact of Vaping.



**YOUTH CREW
KICKBALL
TOURNAMENT**

GO TO
WWW.CKPARTNERSHIP.ORG
TO REGISTER

Community Rolls Out Support for Family Crisis Center Bunco Fundraiser

Stueder Contractors is proud to help support and kick-off efforts of the Family Crisis Center, Inc. with a \$1,000 donation to their upcoming event, Red Shoes and Bunco Too!, to be held on Friday, March 31 at 7 p.m. "It's a cause worth advocating," said MelEesa Stueder "As a board member and business in the community, we hope to help raise awareness with our donation. Our community is stronger because of the services provided by the Family Crisis Center." The event is in its 7th year and Stueder Contractors is proud to continue their support as the event continues to evolve and grow to increase support of domestic & sexual violence survivors and child advocacy. "This event is important to our mission because it helps fund the resources needed in the 12 counties we serve," said Kylee Graves, Executive Director of the Family Crisis Center. "We couldn't do it without the community support, involvement from business leaders like Stueder Contractors and all those who give back."



In 2022 the Family Crisis Center served 272 Domestic Violence Victims, 30 Human Trafficking and stalking victims, 50 Sexual Assault victims, and 253 child abuse victims. They also provided 1,940 bed nights for people in the shelter in 2022, a number that is likely to increase in 2023 with the opening of a second shelter in Larned, KS. "This year's event is growing to include a virtual silent auction that will open the week prior to the event and a raffle you need not be present to win, we'll hear directly from a survivor about the impact our organization makes," said Graves. "And of course, dice rolling with the popular Bunco game!" The Red Shoes and Bunco Too! event benefits the Family Crisis Center, Inc. located in Great Bend, Kansas. The Family Crisis Center serves victims of domestic and sexual violence and child abuse and neglect in twelve counties across central Kansas. For more information, visit their website at www.familycrisiskansas.com.

United Way of Central Kansas Spread The Love This Valentine's Day

Boxes of Love were delivered on Valentine's Day to 350 seniors across Barton & Pawnee Counties. With support from Presenting Sponsor Cuna Mutual Group, along with The University of Kansas Health Systems each reusable tote bag contained fuzzy socks, toothbrush and toothpaste, facial tissue, and word puzzle books. Sponsorship from Midwest Energy & Thrivent Financial Services put chocolates and memo magnets in each package. These were delivered to seniors across the area in partnership with Meals on Wheels, ElderCare Home Services, Golden Belt Home Health & Hospice, as well as various nursing homes and senior centers in Ellinwood, Great Bend, Hoisington, and Larned. New this year, boxes were available to purchase for loved ones and were hand delivered to recipients on Valentine's Day. Daycare centers, schools, youth organizations, and individuals across our area made more than 1,000 Valentine's Day cards which were distributed in each box to show the recipients that they are still cared about and remembered. To put these together, UWCK partnered with Barton Community College Men's Soccer team who filled the 350 bags in under 45 minutes. The Barton Community College Athletic Training Department assisted with delivery in Great Bend. "We love to see the smiles on the faces of those that receive these boxes. Through this project we hope to remind people to reach out to those around us who may not have anyone close in their lives. A simple act of kindness goes a long way." Charell Owings, UWCK Executive Director.



Scan to Check Availability DPIL



United Way of Central Kansas

Shop Talk In 60

March 21st, 2023

12pm

Free for members

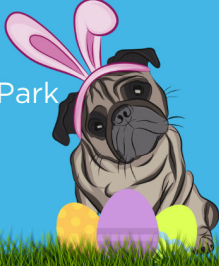
BYOL



GREAT BEND
CHAMBER OF COMMERCE

PAWESOME EASTER EGG HUNT

1:00 PM
Vet's Memorial Park
\$5 per dog



2 EVENTS - 1 DAY
APRIL 1ST

FLASHLIGHT EGG HUNT

8:00 PM
GB Sports Complex
\$5 per kid
Pre-Enroll Required



WWW.GREATBENDREC.COM 620.793.3755 1214 STONE ST.

GREAT BEND

CHAMBER OF COMMERCE

FEATURED AMBASSADOR

KIMBERLY BECKER MOVE YOUR MOUNTAIN COACHING & CONSULTING



What brought you to Great Bend?

I am a homegrown girl! I grew up here, moved away, and came back in 2004 for a job. What keeps me here now is my parents, children, and grandchildren.

Where do you work and what do you do there?

I have a coaching and consulting practice I started in January 2019. I am a Professional Certified Coach with the International Coaching Federation and have over 800 hours of individual, group, and team coaching experience. I am a Practitioner of the Kansas Leadership Center's leadership competencies. My passion is to partner with individuals to unlock their untapped potential through personal and professional development coaching. ICF defines coaching as partnering with clients in a thought-provoking and creative process that inspires them to maximize their personal and professional potential...I partner with Golden Belt Community Foundation to lead the community leadership programs along with offering other leadership training and events for both youth and adults through my private practice. I am a Harrison Assessor and Debriefer which is an assessment tool that assesses 175 behavioral traits that could be strengths or potential derailers. This tool can be used for a pre-hiring assessment, individual and team development, engagement, leadership, and succession planning and is also used to identify where you or your team are with inclusive leadership and a growth mindset. I am a contract coach with BetterUp Coaching and am currently partnering with a church in Gale, Kansas to help them launch a new ministry. I enjoy working with teams to help maneuver through conflict resolution and to inspire a collective purpose so growth and movement can happen. With today's technology, I have clients across the U.S. but do love to travel and be there in person whenever possible. I kind of think of myself as a resource junky. I have recently stepped out as a keynote speaker and educational speaker which I am finding is a passion. My core values are for individuals to feel seen, heard, and valued and I walk that out through coaching, consulting, teaching, and facilitating.

What's one thing about you that would surprise people?

I have 11 grandchildren and I love riding my motorcycle and shooting guns. In 2021, I became a living donor when I donated my kidney.

What energizes you and brings you excitement?

I live for helping people unlock their untapped potential! That is what gets me out of bed in the morning. I love partnering with individuals and teams to provide space and learning for them to become the best they believe everyone has in them what they need to walk out their dreams and I love cheering them on and watching them walk that journey.

At what job, would you be terrible?

Trash truck driver, lol, I would see potential and ideas for things people were throwing out.

How long have you been a Chamber Ambassador and what do you like most about it?

I was honored to become an Ambassador this January and so far I love the connections to others that would not necessarily make connections with. I believe relationships are so important in our lives and our businesses.

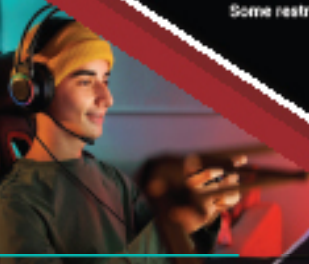
INTERNET WITHOUT LIMITS...

- ✔ STREAMING
- ✔ GAMING
- ✔ DOWNLOADING
- ✔ CONNECTING

Beyond Bounds at the **BEST PRICE!**

✔ \$48/month for 6 months
of 300 Mbps Internet*

*Router included. No contract required.
Some restrictions apply. See store
for details.



Visit nex-tech.com

Barton Facade Improvement Grant

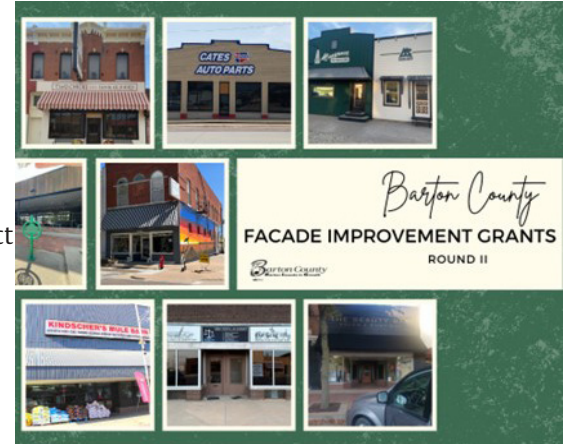
The Barton County Commission is pleased to announce that \$250,000.00 is pledged to the FIG Program, Round II. Application period opens at 8:00 a.m., Wednesday, February 15, 2023.

The Barton County Facade Improvement Grant (FIG) program provides financial assistance to businesses and property owners for façade improvements in defined areas to create a visual impact and increase economic prosperity, accessibility and quality of life in Claflin, Ellinwood, Great Bend, and Hoisington, Kansas. That area generally includes the “downtown areas” of Claflin, Ellinwood, Great Bend and Hoisington and those businesses within “eye shot” of same.

Grants will be provided in the amount of up to seventy five percent (75%) of eligible project costs, with a maximum award of \$20,000.00. No more than twenty-five percent of the award may be used toward signage. No more than twenty-five percent of the award may be used toward windows. Applicants are encouraged to use more than fifty percent of the award toward visual impact.

Applicants must be the property owner or business tenant and in good standing with the government and local authorities, meaning all taxes are current and that there are no code violations. This program gives priority to retailers and restaurants.

Updated application and grant information found at www.bartoncounty.org under the Living in Barton County tab. If you have additional questions, please call Matt Patzner, County Administrator, at 620.793.1800.



Sunflower Gala Set For Sept. 30th; Pancakes/Raffle March 30th

Even though the time of year and the location are changing, the Sunflower Diversified Services Charity Gala promises to offer the 18th annual opportunity to support people with special needs, said Cody Harris, director of planned giving and community support.

The Gala is set for Saturday, Sept. 30 at the Columbus Club, 723 Main, Great Bend. It begins with a social hour at 5:30 p.m.; dinner will be served at 7 p.m. and the evening will wrap up at 10 p.m. “We decided to change the date from late February because last year we hosted the fourth local charity event during that month,” Harris said. “We recognized that people were maybe being overwhelmed by the time they attended our Gala. “So, we looked for a date that would not have as many conflicting events. We encourage people to mark the date on their calendars now.” The Gala is still several months away but Harris said he would accept items for the silent and live auctions anytime. “I am always looking for donations to our auctions and am grateful for them whenever they come in.” Harris also noted that he and his colleagues are brainstorming ideas now and hope to line up some type of entertainment for the evening.

Pancakes/raffle

The 20th annual Sunflower Pancake Feed is set for 4 to 7 p.m. Thursday, March 30 at Prince of Peace Parish Center, 4100 Broadway, Great Bend. Ticket price for the all-you-can-eat meal is \$8; pancakes, sausage and a drink are included. Participants have the choice of dine-in or carry-out. Tickets may be purchased in advance by contacting Sunflower, 620-792-1321, or at the door. DJ Cain will entertain.

The drawing for a new Chevy Trailblazer ACTIV will be held at the pancake feed. The winner does not have to be present at the event.

Tickets are still available; the cost is \$25 per ticket or five for \$100. They are available at Westside Market, 5523 10th, or www.sunflowerdiv.com. Only 5,000 tickets are available. “Central Kansans have always been generous to their neighbors with developmental disabilities and delays,” Harris commented. “We trust they will come through for them again this year. “Every penny we raise stays in the local and area communities that Sunflower serves. Tax dollars do not come close to satisfying all the needs and donors can be assured that the money raised will help with medical and dental care, adaptive equipment and more.” Sunflower serves infants, toddlers and adults in Barton, Pawnee, Rice, Rush and Stafford counties. The non-profit agency is in its 58th year.



Sunflower Bank, N.A. Announces Launch of New Small Business Lending Online Platform in Partnership With SmartBiz

Denver, CO (January 19, 2023) – Sunflower Bank, N.A. is thrilled to announce the launch of a new small business lending platform in partnership with SmartBiz, the leading AI-powered small business financing platform. Through a new end-to-end online portal, small businesses in Sunflower Bank, N.A.’s branch footprint now have access to a streamlined process to apply for conventional small business loans from \$25,000-\$350,000. Small Business Administration (SBA) 7(a) and Express Line loan products will be available beginning in second quarter 2023. “SmartBiz aligns with our relationship banking approach, as well as our ambitious growth plans through

its combination of technology and live support,” said Matt Fitch, Managing Director of Business Banking and SBA at Sunflower Bank, N.A. “We are very excited to be able to meet the needs of more small business customers together and look forward to a long and productive partnership.” SmartBiz CEO Evan Singer said: “Our mission at SmartBiz is to equip every entrepreneur with reliable

access to the capital they need. We are thrilled to partner with Sunflower Bank, N.A. to ensure their clients can grow and strengthen their businesses with the right capital at the right time.” Sunflower Bank, N.A. operates as Sunflower Bank and First National 1870 with 65 branches throughout Arizona, Colorado, Kansas, New Mexico, and Texas. By leveraging the leading-edge technology and experienced small business loan specialists available from SmartBiz, Sunflower Bank, N.A. has added efficiency along with individualized support throughout the entire loan application and approval process.





CHAMBER COFFEE SCHEDULE

Every Thursday | Doors Open at 9am | Program at 9:30am

Tune in on Facebook or YouTube for Virtual Coffees

March 2nd, 2023

PILOT CLUB

Perkins (2920 10th St.)

Great Bend Pilot Club is a member of Pilot International (PI) which is a community - based volunteer service organization founded in 1921 in Macon, Georgia, on the principles of "Friendship and Service". With more than 7,500 members in 375 Pilot Clubs, Pilots are located in the U.S., the Bahamas, Japan and South Africa. Pilots provide financial and hands-on-support for national and local initiatives.

March 9th, 2023

SUNFLOWER BANK

3600 10th St.

Whether you know us as Sunflower Bank, First National 1870, or Guardian Mortgage, our philosophy is simple: we offer a full range of financial products that create possibility in the lives we touch and the communities we serve. We value the needs of each customer and partner with them to help achieve their goals through innovative solutions and locally informed decision-making.

March 16th, 2023

COTTONWOOD EXTENSION DISTRICT

3007 10th St.

In 4-H, we believe in the power of young people. We see that every child has valuable strengths and real influence to improve the world around us. We are America's largest youth development organization—empowering nearly six million young people across the U.S. and over 70,000 youth in Kansas with the skills to lead for a lifetime.

March 23rd, 2023

CENTRAL KANSAS CHRISTIAN ACADEMY

215 Mckinley St.

CKCA has been formed through the cooperation of Christians who have worked together to make sure that quality Christian education is available to those who seek it for their children. CKCA was formed in 2002 when two schools came together to better utilize resources, and provide the highest quality Christian education for Great Bend and the surrounding communities.

March 30th, 2023

DROPPING 22

916 Williams St.

Dropping 22 is a non-profit organization dedicated to helping Veterans, First Responders, the Military Community, and their families reduce their risk of suicide and improve their mental health so they can overcome trauma, depression, anxiety, and other stressors. Our mission is to reduce the mental health service gap for our Veterans, the Military Community, First Responders, and their families through services, tools, and resources that address the high suicide rate and service-related stressors that contribute to depression, anxiety, and PTSD.

April 6th, 2023

BARTON COUNTY HISTORICAL SOCIETY

85 US-281 Hwy

The Barton County Historical Society is a non-profit organization dedicated to preserving and promoting the history and heritage of Barton County. BCHS showcases exhibits on local history, including the Santa Fe Trail, Native American culture, pioneer life, and the county's agricultural heritage. The society also hosts events, educational programs, and outreach activities to engage the community in the county's rich and diverse history.



3307 10th Street • Great Bend, KS 67530

McDonald's

is providing coffee for Chamber of Commerce coffees.

\$25 TICKETS OR 5 FOR \$100
ONLY 5,000 TICKETS AVAILABLE

Drawing to be held March 30, 2023
Sunflower Diversified Services Pancake Feed @ 6:45pm

WIN THIS CAR!

***NEW* Trailblazer Activ**

Sunflower
DIVERSIFIED SERVICES, INC.



Tickets available at:
Westside Market
www.sunflowerdiv.com
scan QR code

THANK YOU!



Proceeds support persons served at Sunflower Diversified Services

Official rules available upon request or at www.sunflowerdiv.com

New?

Submit Your News
Here!

SCAN ME



No formal press release? No communications department? No problem! Simply scan and let us know what's going on in your business, and we'll do the rest!

First Annual Grown-Up Spirit Week

March 27-31, 2023

Grab your coworkers and join in this nationwide effort to let go and have some fun at work! Students get to have Spirit Week with fun themed days of the week, so Grown-Ups should get one too. Boost morale and make fun memories with your teams, AND there are prizes to be won!

MONDAY



Pajama Day

Wear your best seasonally appropriate PJ's and slippers. Extra credit for "just rolled out of bed" hairdo's.

WEDNESDAY

Show off your favorite team gear. Think jerseys and foam fingers. Add some face paint if you want to!



Sports Day

TUESDAY



Decades Day

Embrace your favorite decade - 60's flower child or 90's grunge band? Totally up to you.

THURSDAY



The Office Day

Dress up as your favorite personality from "The Office". Beets, Bears, and Battlestar Galactica.

FRIDAY

Company Colors Day



Deck yourself out in your company's colors from head to toe. This one should be easy!

Daily prizes for the best dressed teams. Grand prizes for the first, second, and third place individual participants AND a grand prize package for the best week-long team participation! Over \$1,500 in cash and prizes will be awarded.

Register Your Team to Participate: www.grownupspiritweek.com



Contestant Overview

For a complete list of rules and guidelines, visit:

www.igniteks.com



This competition is created to empower, support and cultivate entrepreneurs. In Barton County we strive to champion creativity and innovative thinking and to compliment a project or idea with the tools, resources and investment necessary to see it thrive. We aim for this competition to be the first of many efforts to continue that mission in a positive and impactful way.

GREAT BEND ECONOMIC DEVELOPMENT, INC. a private 501(c)6 non-profit organization, located at 3111 10th Street, Great Bend, KS 67530. Referred to as "the Organizer" in this document.

Participation and Eligibility

Startups can enter the competition by applying online for free.

Any startup throughout the US can apply

The Startup must be less than 5 years old (with 10 or fewer employees) at the date of the Grand Finale.

The Applicant must be a **minimum 18 years of age**.

If chosen as a contest winner, the Applicant agrees to locate their business within Barton County, Kansas for a minimum of 5 years.

If the Applicant uses fraudulent methods or otherwise attempts to circumvent the rules, its submission may be removed from eligibility at the sole discretion of the Organizer.

Application period

The application period deadline is June 30th, 2023.

Registration process

Applicants can register online for free by submitting the application components at www.gbbedinc.com/IGNITE.

The online application must include responses to all mandatory areas included in the application

If you have further inquires about IGNITE Rural Business, please contact:

Sara Arnberger GBED President director@gbbedinc.com

Lee Ann June GBED Communications Director marketing@gbbedinc.com

Prizes

The winners of the Semi-final round wins:

- \$50,000 – Grand Prize
- \$30,000 – Runner up
- \$10,000 – 3rd Place
- \$5,000 – People's Choice

Pre-selection Process

Up to 20 applicants will be selected to engage in a one-on-one meeting with a business planning professional.

Chosen applicants will then be paired with a local business mentor in a category the Applicant desires.

Semi-finals & Grand Finale

Up to 10 applicants that complete both steps of the pre-selection process will be deemed "Semi-Finalists" and asked to meet one-on-one with the IGNITE Rural Business jury.

Grand Finale

During the Grand Finale, the Finalists will be provided ten (10) minutes to present their company and attempt to convince the members of the Jury of the merits of their business concept. Every pitch will be followed by five (5) minutes of Q&A conducted by the Jury.

The Grand Finale jury members will base their decisions on the following criteria:

- Innovation
- Creativity
- Long-term business strategy and viability





Sponsorships Packages



Checks can be made out to Great Bend Economic Development, Inc., IGNITE in the memo. If you have further inquires about sponsorships or the IGNITE Rural Business Competition, please contact GBED:

Sara Arnberger director@gbedinc.com
GBED President

Lee Ann June marketing@gbedinc.com
GBED Communications Director

Silver

\$1,000

Your company logo on all event marketing materials

4 Tickets to the live event

Company logo to be included in the program to be handed out at the event

Gold

\$2,500

Company logo on all event marketing materials

6 Tickets to the live event

A dedicated half page in the program to be handed out at the event

Only 10 available

Diamond

\$5,000

Company logo on all event marketing materials

A dedicated ad on the IGNITE web page

A dedicated whole page in the program to be handed out at the event

10 Tickets to the live event

Company logo included on live stream

Only 5 available

Investor

\$10,000

Company logo on all event marketing materials

A dedicated ad on the IGNITE web page

A dedicated whole page in the program to be handed out at the event

Dedicated balcony space for the live event to seat up to 14 people with dedicated wait staff.

Pre event party for your company

Commercial to be played live and via the live stream

Sponsorship swag bag

Company logo included in live stream

A seat on the IGNITE Committee for the following year's competition

Only 3 available

3111 10th Street | 620-796-2407

www.igniteks.com