

Great Bend Chamber Names New Board Members, Officers Elected



Nancy Francis
Board Chairman

The Great Bend Chamber of Commerce welcomes new members to its Board of Directors. Additionally, the Board elected new officers for the year.

Beginning three-year terms are Andrew Murphy, Dr. Bill Neideree, Deanna Eldridge, Tim Miller and Gui Burley. Murphy represents Innovative Livestock Services; Neideree is a veterinarian with Countryside Veterinary Associates; Eldridge represents Eldridge Fencing; Miller is with Oilfield Manufacturers Warehouse Inc.; and Burley works for Mid-Kansas CAP Inc.

Serving one-year terms are Linda Marmie, Great Bend



Mark Mingenback
Vice-Chairman



Dan Brungardt
Treasurer



Dennis Call
Immediate Past Chmn.



Lores Appel



Gui Burley



Sheryl Cheely



Bob Dema



Deanna Eldridge



Robin Fabricius



Nick Gregory



Linda Marmie



Dr. Roger Marshall

Continued on Page 2



Becca Maxwell



Tim Miller



Andrew Murphy



Dr. Bill Niederee



Mike Petz



Kip Spray



Shane Spurlock



David Thill



Cris Collier
Ex-officio



Dr. Carl Heilman
Ex-officio



Ken Roberts
Ex-officio



John Sullivan
Ex-officio



Sen. Ruth Teichman
Ex-officio



Dr. Tom Vernon
Ex-officio



Joe Wilson
Ex-officio



Rep. Bill Wolf
Ex-officio

Great Bend! CHAMBER of COMMERCE Outlook

A Monthly Publication of The Great Bend Chamber of Commerce
1307 Williams
Great Bend, Kansas 67530
Phone: 620-792-2401 Fax: 620-792-2404
E-mail address: gbcc@greatbend.org
www.greatbend.org
Michael Dawes, Editor

2007 Leadership EXECUTIVE COMMITTEE

Chairman
Nancy Francis
Adams, Brown, Beran & Ball, Chtd.
Vice-Chairman
Mark Mingenback
Central Kansas Medical Center
Treasurer
Dan Brungardt
USD #428
Past Chairman of the Board
Dennis Call
Call Ins./BMI

BOARD OF DIRECTORS

Lores Appel
Jimlo Glass
Gui Burley
Mid-Kansas CAP
Sheryl Cheely
Volunteer
Bob Dema
CPI Qualified Plan Consultants, Inc.
Deanna Eldridge
Eldridge Fencing
Robin Fabricius
Watkins, Calcara, Chtd.
Nick Gregory
Assistant City Administrator
Linda Marmie
Great Bend Community Foundation
Dr. Roger Marshall
Surgical & Diagnostic Center of Great Bend
Becca Maxwell
Sunflower Bank
Tim Miller
Oilfield Manufacturers Warehouse Inc.
Andrew Murphy
Innovative Livestock Services
Dr. Bill Nederee
Countryside Veterinary Associates
Mike Petz
Great Bend Industries
Kip Spray
Venture Corporation
Shane Spurlock
McDonald's
David Thill
Sunflower Bank
EX-OFFICIO
Cris Collier
Great Bend Convention & Visitors Bureau
Dr. Carl Heilman
Barton County Community College
Ken Roberts
City of Great Bend
John Sullivan
Great Bend Chamber Ambassadors Chairman
Rep. Bill Wolf
Kansas House of Representatives Dis. 112
Sen. Ruth Teichman
Kansas Senate District 33
Dr. Tom Vernon
USD #428
Joe Wilson
Barton County Commission

CHAMBER STAFF

Jan Peters
President/CEO & Economic Development Director
jpeters@greatbend.org
Michael Dawes
Marketing & Communications Coordinator
mdawes@greatbend.org
Lacey Oetken *Office/Business Manager*
Lori Waters *Membership Sales*

The Outlook is printed by The Great Bend Tribune, Great Bend, Kansas

Dawes becomes new Marketing and Communications Coordinator for Chamber

Nancy Francis, Chairman of the Search Committee for the Great Bend Chamber of Commerce & Economic Development announces the hiring of Michael Dawes as Marketing and Communications Coordinator for the Chamber. Dawes began his new position Jan. 3.

He will oversee the development of all marketing materials for the Chamber, its Web site, and its communications programs. Specifically, he will prepare the monthly newsletter, Outlook, write and disseminate news releases, community profiles, Economic Development information, brochures, and provide information for the Chamber Web site and centralkansasjobs.com

Dawes previously served as coordinator of college communications at Barton County Community College, a position he held for nearly six years. He worked at the college for more than 15 years, serving first as sports information director for nearly a decade. Before coming to Great Bend, Dawes worked as a city beat reporter and sports editor for the Daily Reporter in Derby for more than two years, while completing a bachelor's degree in journalism from Wichita State University. He later completed a master's degree from Fort Hays State University after moving to Great Bend. He is also a veteran of the United States Navy.

Dawes is married to Dana; they have two children, Grant, 12, and Nate, 7.



Michael Dawes

New Board Members Named

Continued from Page 1

Community Foundation; Dr. Roger Marshall, Surgical & Diagnostic Center of Great Bend; and Sheryl Cheely, Community Volunteer.

Nancy Francis, Adams, Brown Beran & Ball Chtd., will serve as Board Chairman and Mark Mingenback, Central Kansas Medical Center Foundation, Inc., is the new Vice-Chairman. Other officers for the year are Dan Brungardt, USD 428, Treasurer; and

Dennis Call, Call Insurance/BMI, is Immediate Past Chairman.

Remaining Chamber Board members are Bob Dema, CPI; Kip Spray, Venture Corp.; David Thill, Sunflower Bank; Mike Petz, Great Bend Industries; Lores Appel, Jimlo Glass; Robin Fabricius, Watkins, Calcara, Chtd.; Nick Gregory, City of Great Bend; Shane Spurlock, McDonald's; and Becca Maxwell, Sunflower Bank.

Ex-officio Board members are Ken Roberts, City of Great Bend; Dr. Carl Heilman, Barton County Community College; Dr. Tom Ver-

non, USD 428; Joe Wilson, Barton County Commission; Rep. Bill Wolf, Kansas House of Representatives District 112; Sen. Ruth Teichman, Kansas Senate District 33; Cris Collier, Great Bend Convention and Visitor's Bureau; and John Sullivan, Great Bend Chamber Ambassadors Chairman.

Retiring from the Board are Mark Schukman, Advanced Therapy; Desa Marmie Behr, Marmie Ford; Donna Zimmerman, Barton County Clerk; and Steve Ferry, Aquila.

CATHOLIC HEALTH INITIATIVES

Central Kansas Medical Center

St. Rose Campus, 3515 Broadway, Great Bend, KS 67530 - (620) 792-2511
St. Joseph Campus, 923 Carroll, Larned, KS 67550 - (620) 285-3161

"HEALTH CHAT"

Find Out What's New At CKMC
8:35 AM Every Tuesday
Only On KVGB AM 1590

BMI

Benefit Management Inc.

Dennis A. Call, CLU
2015 16th
P.O. Box 1090
Great Bend
620-792-1779

Oetken hired as Chamber Office/Business Manager



Lacey Oetken

Nancy Francis, Chairman of the Search Committee for the Great Bend Chamber of Commerce & Economic Development announces the hiring of Lacey Oetken as the Office/Business Manager for the Chamber. Oetken has worked for the Chamber since June 2005 as Administrative Assistant. She was named to her new position Dec. 6.

Her position responsibilities include maintaining operations of the Chamber Office and membership database, coordination of events, meetings and financials.

An Olmitz native, Oetken is a 2004 graduate of Otis-Bison High School, but she now resides in Great Bend. Following graduation, Oetken left the area for nine months and worked as a certified nurse's aide at Mercy Hospital, Fort Scott. Previously, she served as a CNA at Great Bend Health and Rehabilitation Center. While a high school student, Oetken held customer service and book-keeping positions for the Great Bend Tribune and Eldridge Fencing, Great Bend.

What's New!

Satellite Pros of Great Bend is proud to announce that it is now an authorized Mitsubishi Big Screen Television dealer, offering 0% financing through 2010. As well as being your locally owned Dish Network Dealer for more than four years, we have added the Big television to our lineup to become your Hi Definition source, as well as service provider! We also have added Olevia by Syntax to our Flat Panel television lineup. And coming soon: Television and Electronics Repair! Satellite Pros 3707 10th at (mini-mall west of Wal-Mart)

Golden Belt Community Concert Association presents: "Alexandre Moutouzkine, multi-award winning international pianist", Saturday, January 27, 2007, at 7:30 p.m. in the Great Bend Municipal Auditorium for members of the concert association. Any full-time enrolled student also will be admitted for a \$5 donation at the door. This young multi-award winning international pianist performs a program of masterpieces, loved by all. Doors will open at 6:30 p.m.

In 1995, at the age of 14, Moutouzkine won first prize in the St. Petersburg International Piano Competition in St. Petersburg, Russia. He went on to claim top prizes at international competitions in Kharkov, Ukraine and Argentina. He burst onto the

U.S. concert scene afterwinning the Special Award for Artistic Potential at the 11th Van Cliburn International Piano Competition, followed by debuts at the Kennedy Center and Carnegie Hall.

Alexandre was born in 1980 in Yoshkar-Ola, Russia to a family of professional musicians where he began his studies with his mother and continued to claim top prizes at international competitions in Kharkov, Ukraine and Cordova, Argentina followed by tours throughout Germany, France, Russia, Ukraine, Kazakhstan and Italy, winning first prize there in the Calabria International Piano Competition. His successes continued when in 2003 he received a Master of Music degree from Manhattan School of Music.

Recent performance activities include a chamber music concert with members of the Dallas Symphony, a concert tour throughout Spain and the Canary Islands, a CD recording at the Spanish National Classical Radio Station, and a Vienna debut recital at the Cervantes Institute. His recital at the Fundacion Canal in Madrid was broadcast live on National Spanish Television. His is indeed an outstanding talent to be enjoyed by all.

The next Golden Belt Community Concert will be "Puttin, on the Hitz, The Best of Irving Berlin" on Saturday, February 17, 2007.

NEW MEMBERS

Welcome the following new Chamber members and consider them as you shop and do business in Great Bend. They've made an important business investment by joining the Chamber.

Mountain Veterinary Services Katherine Mountain D.V.M.

608 N Bismark
Ellinwood, KS 67526
(620) 564-3337
Category: Veterinarians

Children's Miracle Network Melissa Kirkwood

723 N McLean, Suite 310
Wichita, KS 67203
(316) 946-5020
Category: Non-Profit Social Service

Shirley Flick, CFP Shirley Flick, CFP

1618 Main Street
Great Bend, KS 67530
(620) 793-9999
Category: Financial Planning/Broker Dealer

Glassman Corporation Christy Phlieger

615 East 13th St., Box 218
Hays, KS 67601
(785) 625-2115
Category: Plumbing-Air Cond.-Heating Contractors

Don't forget - Chamber Gift Certificates are available at the Chamber Office!

NEXTECH
A Rural Telephone Company

- Local Phone
- Long Distance
- High-Speed Internet
- Technology Solutions

3705 10th Street • Great Bend, KS 67530
620.792.3908 • www.nex-tech.com

KANSAS GAS SERVICE
A DIVISION OF ONEOK
1800 Kansas
Great Bend, Kansas
1-800-794-4780

620-792-7017
3820
Broadway
Great Bend
River Bend
assisted living by Americare

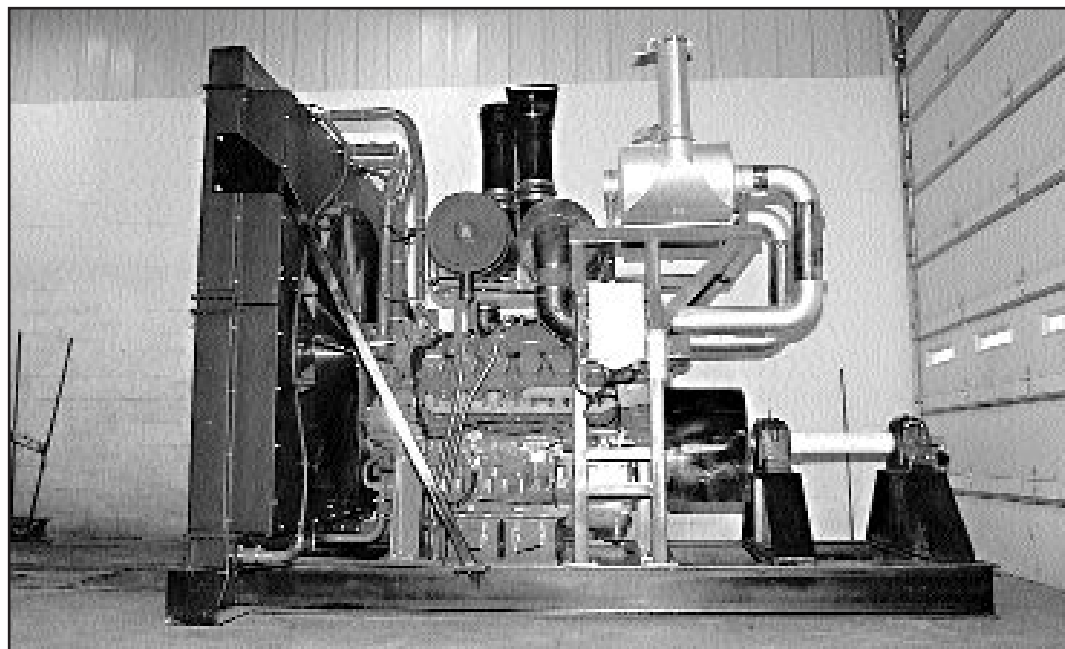
AMERICAN FAMILY INSURANCE
AUTO HOME BUSINESS HEALTH LIFE

MIKE BOYS INSURANCE AGENCY
10th & Main - P.O. Box 1648
Great Bend, KS 67530-1648
(620) 792-1269 or 1-800-658-1612
100 N. Main, Hoisington, (620) 653-4391
"Your Insurance Professionals"

Central Power Systems & Services Grows, Looks to Expand



Engine Overhaul – Shawn Littrel works on an 8V-71 cylinder head in the rebuilding department of the Great Bend's Central Power Systems. The rebuild area expanded greatly when the Great Bend branch became the hub for the company. "We're priced competitively and we have a competitive warranty so our engines end up all over the United States," said Pringle. In the early '90s, Great Bend's branch had two employees providing rebuild service, now it has seven. It went from rebuilding four or five two-cycle engines a month back then to now rebuilding about 14 a month, said Pringle.



Powerful Pump – Pictured is the completed fabrication of the Detroit Diesel 12v2000 MTU DDC power unit that serves as an oil field pump engine. Besides oil field units, Central Power fabricates sand pump engines, hay grinders and special order pump power. Central Power has built pump unit engines for a multitude of companies and industries from Kansas to the Texas Panhandle, said Pringle. The Great Bend branch has increased from one employee doing fabrication to six employees performing that task now and has gone from producing one or two units a month to producing up to seven a month.

Aside from recognizing the distinct Detroit Diesel sign sitting atop a tall post on the outskirts of East 10th Street, the average Joe doesn't know much about Central Power Systems & Services. But the Great Bend branch of Central Power Systems is more than a local business with a unique sign. It manufactures and services Detroit Diesel engines nationwide and its business has expanded greatly in the last 15 years, increasing from just eight employees then to 30 employees today.

"I think a lot of people drive by and wonder what goes on here," said Central Power branch manager Steve Pringle. "The overall public awareness of what we do here, you'd be surprised at how many people say, 'I had no idea you did all this.'"

Great Bend's operation is one of eight locations that the company maintains with five of them in Kansas, two in Missouri and one in Oklahoma. The Great Bend branch serves as the primary hub for rebuilding Detroit Diesel two-cycle engines.

Industries that utilize diesel engines rely on Central Power Systems for manufacturing and servicing their engines, pumps and generators. Much of the company's business comes from the oil field, farm production and the trucking industry, but it also builds, installs and services generators for hospitals, fire stations, salt mines, and other operations that rely on stand-by power. Additionally, Central Power Systems maintains a fleet of rental generators, albeit most of them from the Great Bend branch have been shipped to Western Kansas to provide power following the recent blizzard that blanketed the region and knocked out electrical power. Great Bend's branch also provides field service with three trucks to maintain the engines it manufactures and rebuilds.

Central Power Systems opened its Great Bend doors in the 1950s as GM Diesel in a

small 5,000-square-foot building. Ironically, the old building is located on the south side of the street from the business' 25,000 square feet of work space that it has today. For nearly four decades, Great Bend's Central Power Systems experienced modest growth, but 15 years ago its workforce began to expand dramatically in an attempt to keep up with increased demand from the industry. From eight employees in 1992, the company increased to 18 employees by 2000 and it has progressively expanded its workforce to the 30 employees it has today.

"In the early '90s, we used to build four to five engines a month on the two-cycle rebuild end," explained Pringle, who has been with the company for more than 25 years. Now we're building up to 14 engines a month. On the fabrication side, we used to build one or two of those a month, now we're building seven a month."

There is so much production work in fact that Pringle said his branch would hire four diesel engine technicians immediately if they came to the branch trained and experienced.

"We need them, both in the truck shop and the rebuild area and we'd hire them on the spot," said Pringle. "We're looking for guys you can give a job order to when jobs come in and they are able to diagnose and fix problems."

He acknowledged that the shortage for trained technicians is nationwide, however, and

quoted sources saying that for every three technicians retiring today only one is entering the workforce.

Also because of the growth, Pringle said the local company is searching for a qualified production foreman for its two-cycle rebuild area and it's looking to hire an experienced parts department manager.

Even with the hiring roadblock for qualified employees, Central Power Systems is on the move to expand its operation. The company has implemented WheelTime, a customer service network, comprised of 26 distributors representing 220 service locations that are dedicated to the percentage of time customer equipment is available in the field. Related to that quality-service endeavor, Central Power Systems this year introduced its All-Makes program that entails keeping a large inventory of standard truck parts to help service the area trucking industry. Pringle said the company made a substantial investment with the purchase of parts like brake chambers, clutches, starters, alternators and other standard truck parts.

"We have a lot of different things in the works," said Pringle. "Really, some of the hold-up is finding the qualified people to help take it to the next level because we are looking to expand."

To find out more about Central Power Systems & Services, access its Web site at www.cpower.com.



Troubleshooter – Central Power Systems and Services employee Shawn Crane works under the hood of a truck on an S-60 Detroit Diesel engine. The Great Bend company has eight truck bays, including two drive-through bays to provide service for its customers. Central Power's new addition customer service network, called WheelTime is a move by the company to provide less downtime for the customer with better communication between the technician and the customer.



Generator Line – Shown on the grounds of Central Power Systems, Great Bend, are six 350kw generators in a line. These generators are used in the oil field and are part of the company's in-stock inventory. "Two-and-a-half years ago, some of the things I thought we'd be doing don't compare to what we are doing now," said Pringle. "Things are a lot larger than what I thought we'd be doing. We're doing things on a larger scale and we're doing a lot more of them!"

“Celebrating Great Bend”

85th Chamber Banquet and Annual Meeting Set For Feb. 10

The Great Bend Chamber of Commerce 85th Annual Banquet will be held Feb. 10 at the Highland Convention Center, 3017 10th Street, Great Bend. This year's theme is "Celebrating Great Bend." Included with the banquet is the annual meeting of chamber membership.

A social begins at 6 p.m. and dinner will be served at 7 p.m. A dance will follow the evening's events, which include presentations for "Outstanding Citizen and Business of the Year." Reservations are \$40 per person.

Chamber members should receive their invitations by mid January. Please contact the Great Bend Chamber of Commerce to make reservations, 620-792-2401, gbcc@greatbend.org.

More information about the 85th Chamber of Commerce Banquet will be provided in the February issue of Outlook.

Members Invited to Attend Central Business District Meeting Jan. 16

Great Bend Chamber of Commerce members are invited to participate in the Central Business District meeting scheduled for 8 a.m. Jan. 16. The meeting will be held at the Great Bend Chamber of Commerce and Economic Development, 1307 Williams. Those interested in participating in the meeting can show up at the Great Bend Chamber the morning of the meeting.

We Apologize for This Late Issue of Outlook

The Great Bend Chamber of Commerce apologizes for the tardiness of this January issue of Outlook. Because of the late release of this month's issue, two inserts were distributed late to Chamber members. Those inserts are from Dance by Design Partnership Dance and Sunflower Diversified Services Inc. Chamber Marketing and Communications Coordinator Michael Dawes and the rest of the Chamber staff regret any problems and inconveniences the late release has caused to either of these businesses and the rest of its Chamber membership. In the future, the Chamber will disseminate its Outlook newsletter in timely fashion.

Hoisington Chamber News

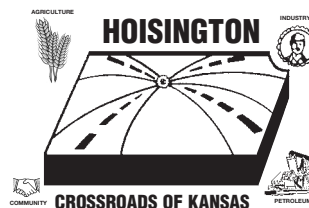
Another year has passed before us. The 2007 Board re-organization was held at the December Board meeting. The new Hoisington Chamber of Commerce President is Dick Stanley, 1st Vice-president Karen Van Brimmer, 2nd Vice-President Mike Aylward, and Secretary-Treasurer Dianne Scott. New board members joining the team for a three-year term are Michael Specht, Lonnie Irvin, Karen Van Brimmer and Don Gordon. Many thanks to Linda Schlegel and Julie Hein for their excellent support the past three years.

The Hoisington Annual Chamber of Commerce Banquet is set for Saturday, January 27, 6:30 p.m. at the Knights of Columbus. Mark your calendars to attend. Invitations will be mailed shortly.

I want to take this opportunity to say thank you to the many volunteers and supporters of the Hoisington Chamber of Commerce. We have had a good year and with everyone working together we can have an even better 2007.

Best Wishes to you and yours for the New Year.

Paula Dinkel, President
Hoisington Chamber of Commerce



Hoisington Schedule of Events

- January 4 – Koffee Klatsch hosted by Don Reif, Jr. Attorney at Chamber Office
- January 11 – Koffee Klatsch hosted by Great Bend Tribune at Chamber Office
- January 18 – Koffee Klatsch hosted by Kans for Kids at Chamber Office
- January 25 – Koffee Klatsch hosted by Landmark National Bank at Landmark
- January 27 – Annual Chamber Banquet -6:30 p.m. Hoisington Knights of Columbus.

Ellinwood Chamber News

December was a month of mixed emotions. On one hand was the hectic rushing around trying to find that perfect gift for everyone. This at times can be a fearful experience. During Thanksgiving we were visiting relatives in large city. The day after Thanksgiving we wanted to drive around and see the sights. There was no way to do this and enjoy it. There was bumper to bumper traffic. The stores were full of people some having camped all

night to get the bargains. Some stores opened at four in the morning. Very aggressive drivers and more aggressive shoppers.

On the other hand we have the people who use the season for what it is intended. Giving greetings of a happy holiday, helping other people who are less fortunate, forgiving those who they may have had a falling out with and being thankful for all their blessings. I feel one of my blessings is to live in a



small town like Ellinwood, where people smile and say "Merry Christmas" to the people they meet – taking Christmas at a slower pace and enjoying their family and friends. As they say "Life doesn't get any better than this"

GREAT BEND APPLIANCE, FURNITURE & SLEEP SOURCE
 Where Service Makes the Difference
Dale E. Pruter
 10th & Morton Street
 Phone 620-792-3999
 9 a.m. - 6 p.m. M-F
 9 a.m. - 5 p.m. Sat.
 KitchenAid Whirlpool

Aquila
 2300 Broadway
 Great Bend
 793-7841

Great Bend Packing Co. Inc.
 From the heart of Kansas
 "TOTAL QUALITY ADVANTAGE"

KELLER REAL ESTATE & INSURANCE AGENCY INC.
 "Serving Great Bend Since 1968"
 • RESIDENTIAL • COMMERCIAL • FARM PROPERTIES
 620-792-2128
 1-800-281-2128
 1101 Williams Great Bend

United Way of Barton County

United Way of Barton County surpasses 2007 goal

P.O. Box 400
Great Bend, KS 67530
(620) 792-2403

The American Red Cross

Barton County Young Men's Organization

Central Kansas CASA, Inc.

Girl Scouts of Central Kansas

ElderCare

Great Bend Children's Learning Center

RSVP

Barton County Youth Care, Inc.

Quivira Council of Boy Scouts

Catholic Social Service

United Cerebral Palsy

The Family Crisis Center

Ourselves and Our Families (Coalition for the Prevention of Child Abuse)

Salvation Army

Meals on Wheels

New Life for Teen Parents

Ellinwood Heritage Center

With 2007 Campaign Chairmen, Bob and Carol Dema, leading the way, the United Way of Barton County surpassed its 2007 Campaign Goal by \$20,000. In 45 years of existence, \$155,000 was the largest goal ever set for the organization. Reaching the \$175,000 mark says a great deal about the community's giving attitude. "What a tremendous effort and accomplishment by everyone involved," said Sherry Langrehr, United Way Executive Director. "From the donors who make everything possible through their generosity, to the agencies who provide such vital services to our residents, thank you."

This year, the United Way board set out to accomplish a task for the community that would impact each resident. Langrehr went on to explain that the Barton County goal is fairly low compared to other communities our size. "The current executive board of directors are extremely motivated and progressive when it comes to the well being of the community. They intend to increase the goal amount, over a period of time, to where it belongs in order to fully benefit the agencies and benefit the residents they are providing services to. The board recognizes that it takes a community effort to accomplish a task of this manner and are confident that Barton County will do very well in these efforts."

Langrehr said that "Bob Dema continues to remind all of us that our quality of life in our home town is better because of these agencies. Whether an individual is receiving services from an agency or not, possibly one of their friends, or family, or neighbors are. We all benefit."

Realizing that it takes different types of donors to reach the level of success that the United Way reached, Langrehr stressed how important it is that everyone engages. "From individual residents on up to corporate

level giving, we need everyone. It doesn't always matter how much the donation is, what matters is that people give." With this in mind, the United Way focused heavily on the payroll division during this campaign. This division usually accounts for 50-55% of the campaign goal. This year, it compiled 66% of the goal. This is a great indication that there are a large number of employees participating in their company's campaign. Employees are given the opportunity to contribute through their payroll, therefore, their donation is made in small increments instead of having to give a large donation at one time. It is the easiest way for employees to give back to their community and to impact such a large number of agencies.

Future United Way of Barton County plans will be to continue to grow the campaign and to attract agencies to become a part of the organization. Each person in the community has a passion when it comes to helping others. United Way wants to retain and attract agencies that people are passionate about, allowing donors to support those agencies in a way they might not otherwise be able to. The most rewarding factor for United Way contributors is that their one contribution is spread to many great causes, not just to one. And, their donation stays in their local community. Together, the residents of Barton County will continue to make their United Way a priority for the community. After all, we are all in this together and taking care of each other is what matters.

Barton County donors know . . . what matters®

CPI and Central Kansas Medical Center exceed campaign expectations

The United Way of Barton County Executive Board of Directors set out to educate as many residents as possible during the 2007 Campaign. Members want every individual who lives in Barton County to understand that their lives are greatly affected by the United Way and the agencies they serve, and they want them involved in some way. Recognizing that it is easier for most people to donate in small amounts, they focused a great deal on the payroll division of the campaign. At the beginning of the campaign there were 59 companies involved with the payroll division. During the campaign, 10 new companies jumped on board to become a part of something very special within the community, raising the total to 69 payroll companies. Companies range in size from one employee to over 600 employees.

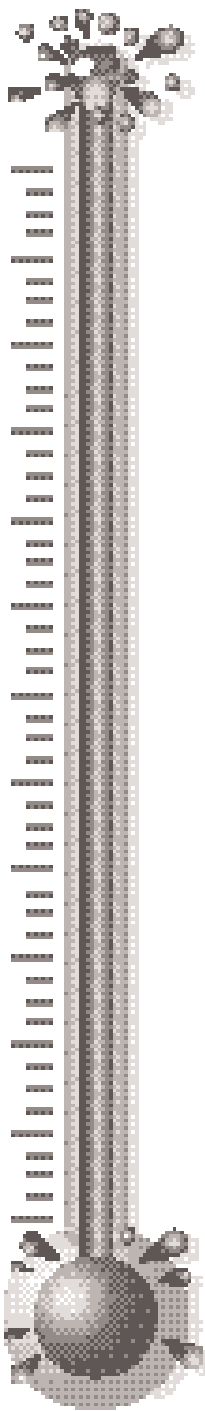
The United Way was able to share the 2007 Campaign video with numerous

employees throughout the county and to share several reasons why it takes each individual within the community to engage their support. The important thing is that people are involved. Whether they are volunteering their time or contributing financially, their support is what matters.

Taking top honors in donation dollars given through the payroll division were CPI and Central Kansas Medical Center. These two companies ran very similar employee campaigns within their organizations. Both companies took the initiative to make the United Way an internal priority. Both companies started at the top with their administration leading the way as an example for that priority. Both companies took the time to express the importance of our local United Way to each employee, giving each individual the opportunity to give back to their community. Both companies exceeded their

campaign expectations, reporting record breaking totals. CPI raised \$24,000, increasing their contribution by \$22,000 from last year's campaign with CKMC raising \$22,800, increasing their contribution by \$12,500 from 2006. CPI and CKMC's administration stressed that they wanted to let their employees know that United Way is important in their community. United Way gives employees the opportunity to give back through their payroll, in any amount they choose, with the money remaining local.

These two companies certainly were not the only ones following this path of success where the United Way of Barton County is concerned. Be sure to follow the next edition in the Outlook for a complete update on the companies involved with the success of the payroll division, along with the rest of the campaign results.



Coffee Schedule Thursdays at 9:30 am

January 4, 2007
Enterprise Rent-A-Car
9047 6th St.

Our mission is to fulfill the automobile rental and leasing needs of our customers and, in doing so, exceed their expectations for service, quality and value. We will strive to earn our customers' long-term loyalty by working to deliver more than promised, being honest and fair; and "going the extra mile" to provide exceptional personalized service.

January 11, 2007
Central Kansas Custom Upholstery
2200 Main

All your upholstery needs – Auto: seats-door panels-carpet-headliners. Home: (inside and out) furniture-carpet binding. Throw pillows, window treatments. Play: Boat seats-camper interiors-buggies-ATV and motorcycle seats.

January 18, 2007
Curves
2100 Washington

Curves provides a total body workout in only 30 minutes. The equipment is designed especially for women and we always have a circuit coach in the circuit to help our members.

January 25, 2007
Nex-Tech
3705 10th

It's been a great year in the Great Bend Nex-Tech office and one year since we've moved into our new office location on 10th Street. The new location has proved to be a success as new customers are signing up every day. Coming up in 2007, we are excited to announce our new calling features campaign, Feature Plinko. Stop in and play this game anytime and win a prize every time – whether it be a free calling feature for a month, an instant winner prize, or a chance to enter your name in the grand prize drawing. It's fun for everyone and you can't lose! We also continue to offer Nex-Tech Rewards to eligible customers. If your business has Nex-Tech services, than your employees are eligible for Nex-Tech Rewards, which offers them a \$50 Chamber gift certificate for signing up with Nex-Tech.

February 1, 2007
Catholic Community of Great Bend
4100 Broadway

Holy Family School is a Pre-Kindergarten through 6th Grade Catholic elementary school. Our staff is fully certified and qualified, and we are accredited by KSDE. Enrollment is currently at 225 students, with a teacher to student ratio of 1 to 15.

Prestige Coffee Systems
is providing coffee for Chamber of Commerce coffees.



1724 22nd St.
Gt. Bend, Ks. 67530
1.888.520.5282

Barton County Economic Outlook

Employment-Barton County

	Nov. 05	Nov. 06
Labor Force	14,851	15,363
Employment	14,243	14,854
Unemployment	608	509
Unemployment Rate	4.1%	3.3%
KS Unemployment	5.0%	4.2%

Employment Sectors-

	Nov. 05	Nov. 06
Goods Producing Ind.	4,850	5,440

Service Producing Ind.	7,950	7,850
Farm	975	975

Permits

	Nov. 05	Nov. 06
Commercial-GB	10	10
Residential-GB	36	37
Addition/Equip-GB	3	0
Cars-County	18	37
Trucks-County	9	19

City/County Sales Tax

Collections

	Nov. 05	Nov. 06
Sales Tax	\$432,013	\$430,954

January Calendar

- 1... Happy New Year!! Chamber office closed
- 4... Chamber Coffee: Enterprise Rent-A-Car, 9:30 a.m. Ambassador Luncheon, Chamber Conference Room, 12:00 p.m.
- 8... Great Bend City Council Meeting, City Council Chambers, 7:30 p.m.
- 10... Beautification Committee Meeting, Chamber Conf. Room, 1:30 p.m.
- 11... Chamber Coffee: Central Kansas Custom Upholstery, 9:30 a.m.
- 13... Rowan (live music), The Back Room, Barton Arts Center, 8:00p.m.
- 14... Sunflower Diversified Texas Hold'em, Highland Hotel, registration @ 10:30 a.m., tournament starts @ 1:00.p.m.
- 15... Executive Board Meeting, 12:00 p.m.
- 1-16/2-18... Selections from Permanent Collection, Shafer Art Gallery, BCCC Black History Month Exhibition, Shafer Art Gallery, BCCC
- 17... Chamber Board Meeting, The Front Door, 7:30 a.m.
- 18... Chamber Coffee: Curves, 9:30 a.m.
- 19... Chamber Ambassadors Laid-Back-Lunch, TBA, 12:00 p.m.
- 20... Legislative Coffee, Oil & Gas Museum, 10:00 a.m.
- 21... Reception for "Selections from Permanent Collection", BCCC, 1-3 p.m.
- 22... Great Bend City Council Meeting, City Council Chambers, 7:30 p.m.
- 25... Chamber Coffee: Nex-Tech Wireless, 9:30 a.m.
- 27... Golden Belt Community Concert presents, Alexandre Moutouzquine, Great Bend Auditorium
Krista Detor (live music), The Back Room, Barton Arts Center, 7:30 p.m.
- 31... Stuff newsletter

February Calendar

- 1... Chamber Coffee: Holy Family School/Catholic Community, 9:30 a.m. Ambassador Lunch, Chamber Conference Room, 12:00 p.m.
- 2... Bill Isles, The Back Room, Barton Arts Center, 8:00 p.m.
- 5... Great Bend City Council Meeting, City Council Chamber, 7:30 p.m.
- 8... Chamber Coffee: Precision Hair Design, 9:30 a.m.
- 10... Five Man Trio, The Back Room, Barton Arts Center, 8:00 p.m. Annual Chamber Banquet, Highland Hotel, social: 6:00, dinner: 7:00, dance: 9:30-12:30
- 14... HAPPY VALENTINES DAY!!
- 15... Chamber Coffee
- 16... Laid Back Lunch, Chamber Conference Room, 12:00 p.m.
- 17... Golden Belt Community Concert presents "Puttin on the Hitz, the Best of Irving Berlin", Great Bend Municipal Auditorium, 7:30 p.m.
- 19... Great Bend City Council Meeting, City Council Chamber, 7:30 p.m.
- 21... Chamber Executive Board Meeting, 12:00 p.m.
- 22... Chamber Coffee: First Assembly of God, 601 Patton Road, 9:30 a.m.
- 22-25... Great Bend Community Theatre presents "Fully Committed", Thurs. - Sat. 8:00 p.m., Sunday 2:00 p.m.
- 24... Legislative Coffee: Oil & Gas Museum, 10:00 a.m.
- 28... Chamber Board Meeting, 7:30 a.m.

Send The Chamber Your News

Do you have news that you want printed in the Great Bend Chamber's monthly newsletter, Outlook? If so, please send your news release or news information to Chamber Marketing and Communications Coordinator Michael Dawes. E-mail him at mdawes@greatbend.org, or mail the information to 1307 Williams, Great Bend, KS 67530. Dawes can also be contacted at the Chamber by telephone, 620-792-2401.

Chlumsky Liquormart

2204 Kansas
Great Bend
620-792-1929

Let Ours Be Your Favorite Store



Serving Individuals, Family and Business Concerns

1911 Lakin
(620) 792-4515 Great Bend



4107 - 10th Street
792-3591

1811 Main Street
793-7887

Great Bend, Kansas